

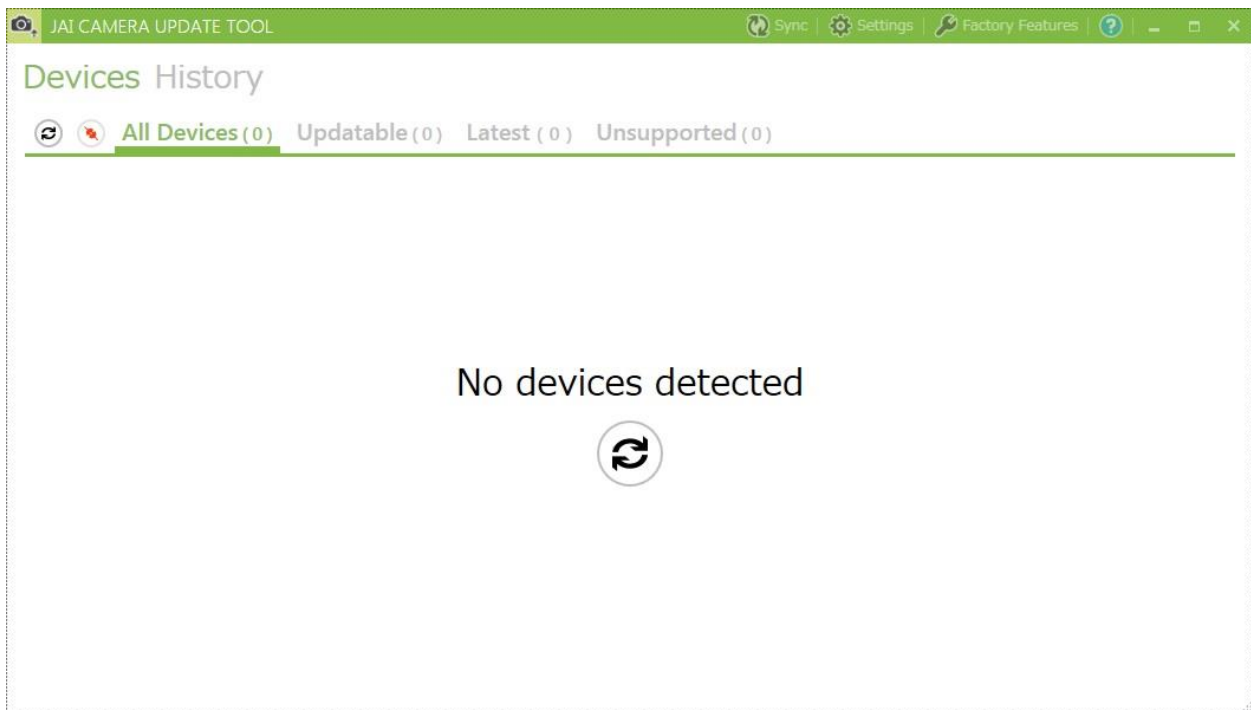
Connecting to CoaXPress cameras with the JAI Update Tool

The JAI Update Tool provides an easy way to update the firmware in a JAI camera (*). These updates can provide new functions and improvements in each new Device Version. The update tool includes a generic USB/GigE Vision/Camera Link transport layer (provided by *.cti files in the JAI SDK and Control Tool), with which you can connect to and update JAI cameras through most interface cards. However, for CoaXPress interface cards, the *.cti file needs to be provided by the card manufacturer.

To update a CoaXPress camera, start by installing the runtime package for the interface card. You can then follow the steps below to recognize the JAI camera and update it.

*Note: JAI Update Tool is not publicly available. It can be provided to select customers on a case-by-case basis upon request. Customers should contact their provider or JAI support if updating is needed. The remainder of this document assumes that the user has been provided with the JAI Update Tool.

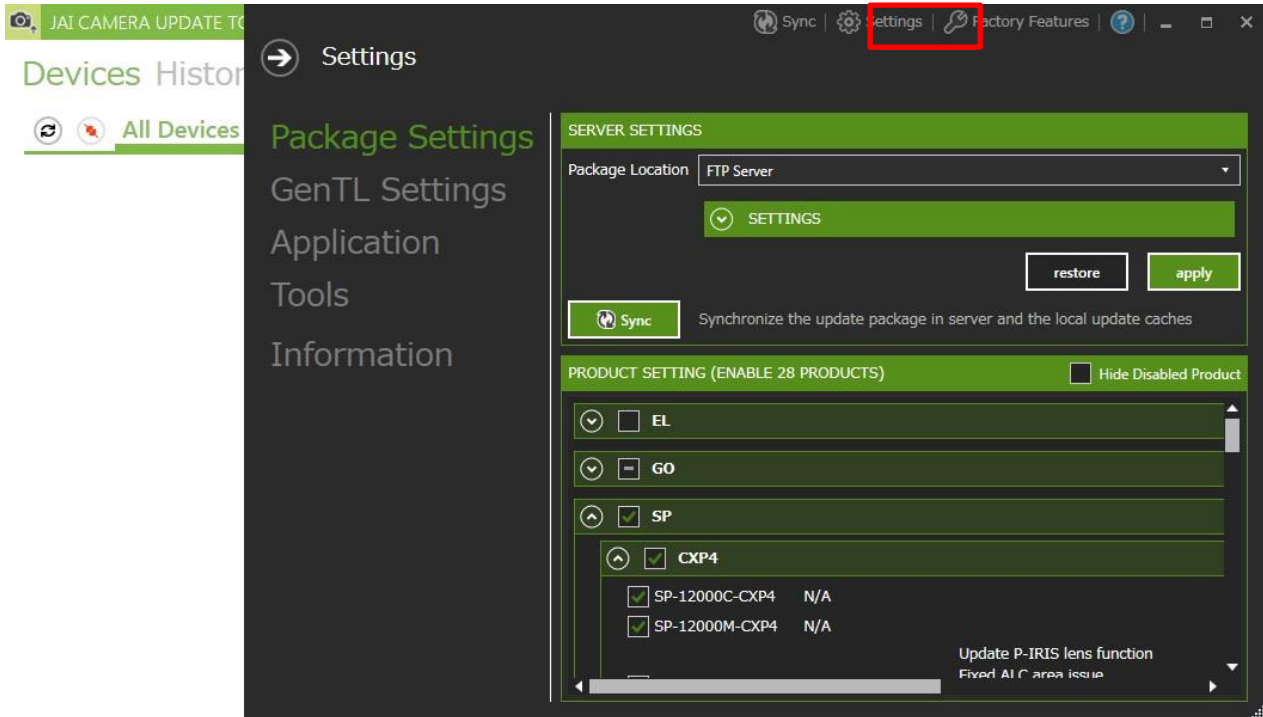
1. **After starting the update tool, it will initially show no devices detected:**



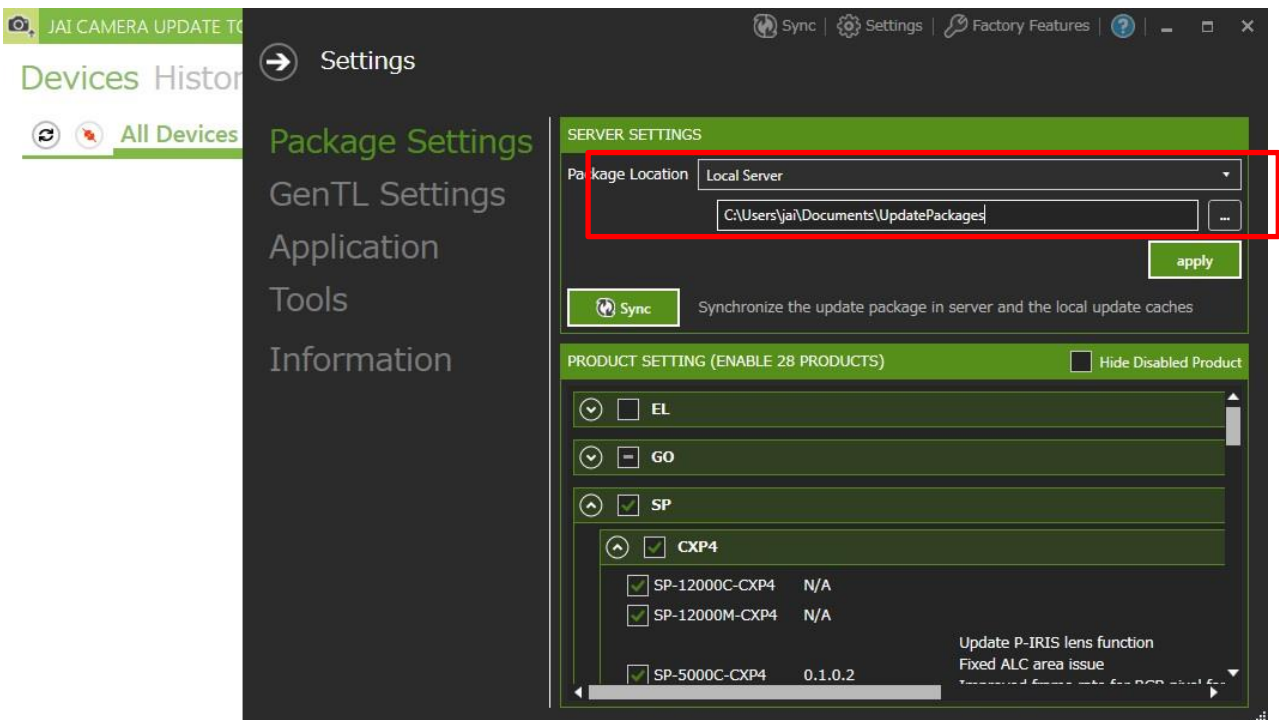
Technical Note

[Connecting to CoaXPress cameras with the JAI Update Tool]

2. Click “Settings” to open the configuration window. Select all the camera types you are planning to update in the “Product Setting” window. Cameras models are grouped by series and by interface.



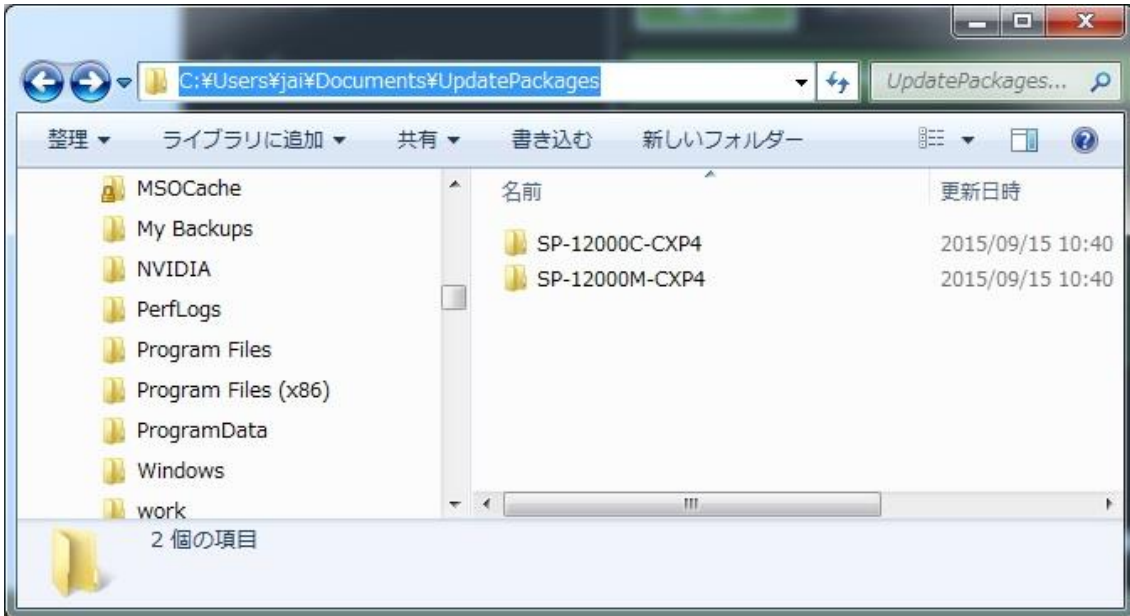
3. If your computer can connect to the Internet, please jump to step 6 to retrieve the latest update package. If not, please change “Package Location” from “FTP Server” to “Local Server”.



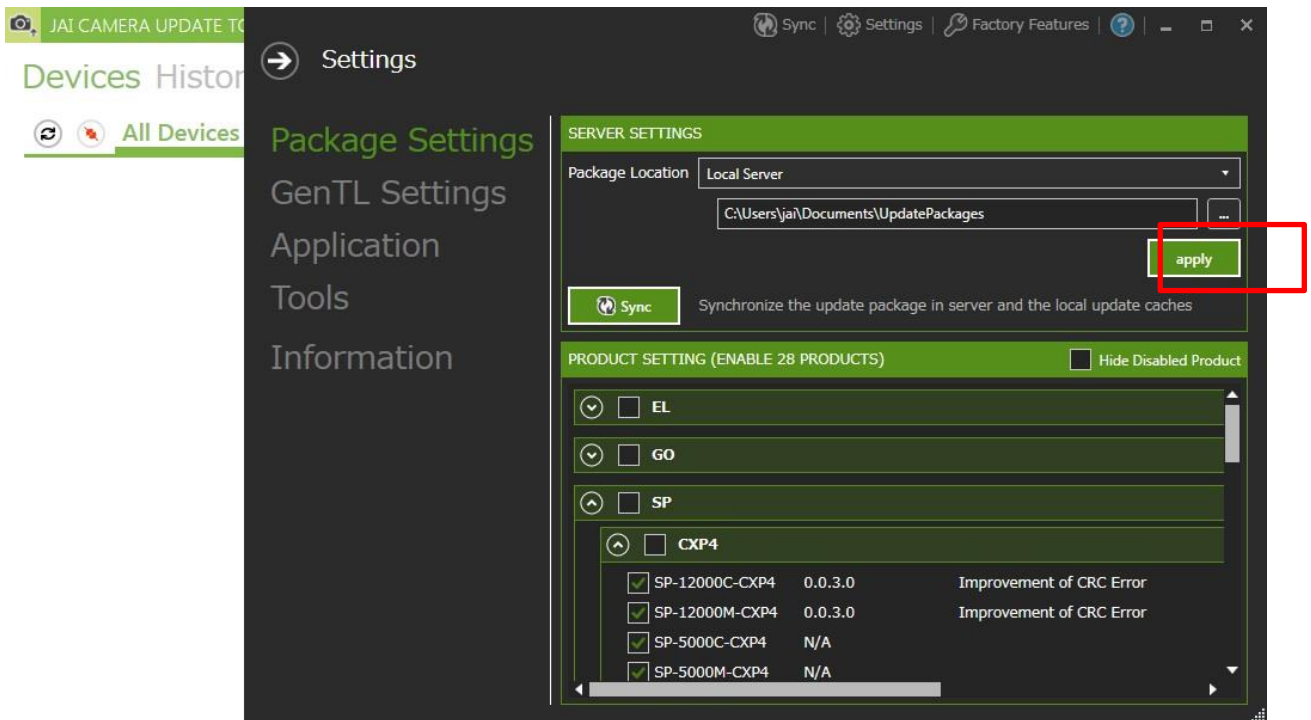
Technical Note

[Connecting to CoaXPress cameras with the JAI Update Tool]

- Copy the update package or packages which you get from your provider to UpdatePackages folder, making sure the path is same as shown in the “Local server” setting in step 3.



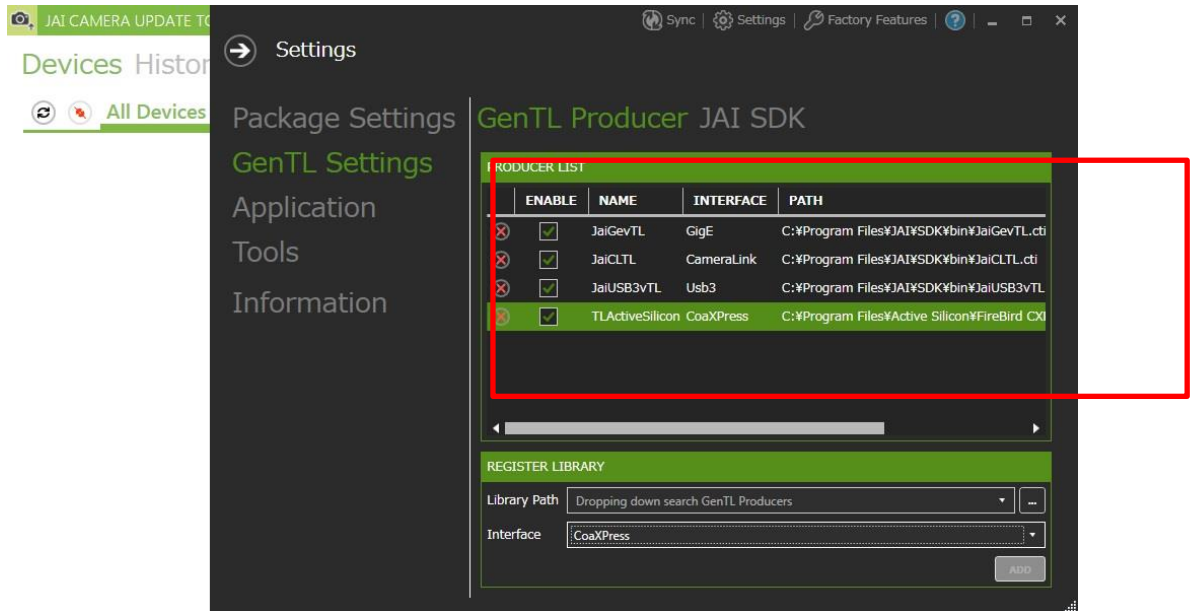
- Click “Apply” and update tool will scan and prepare the package(s) automatically for the camera(s) you have selected.



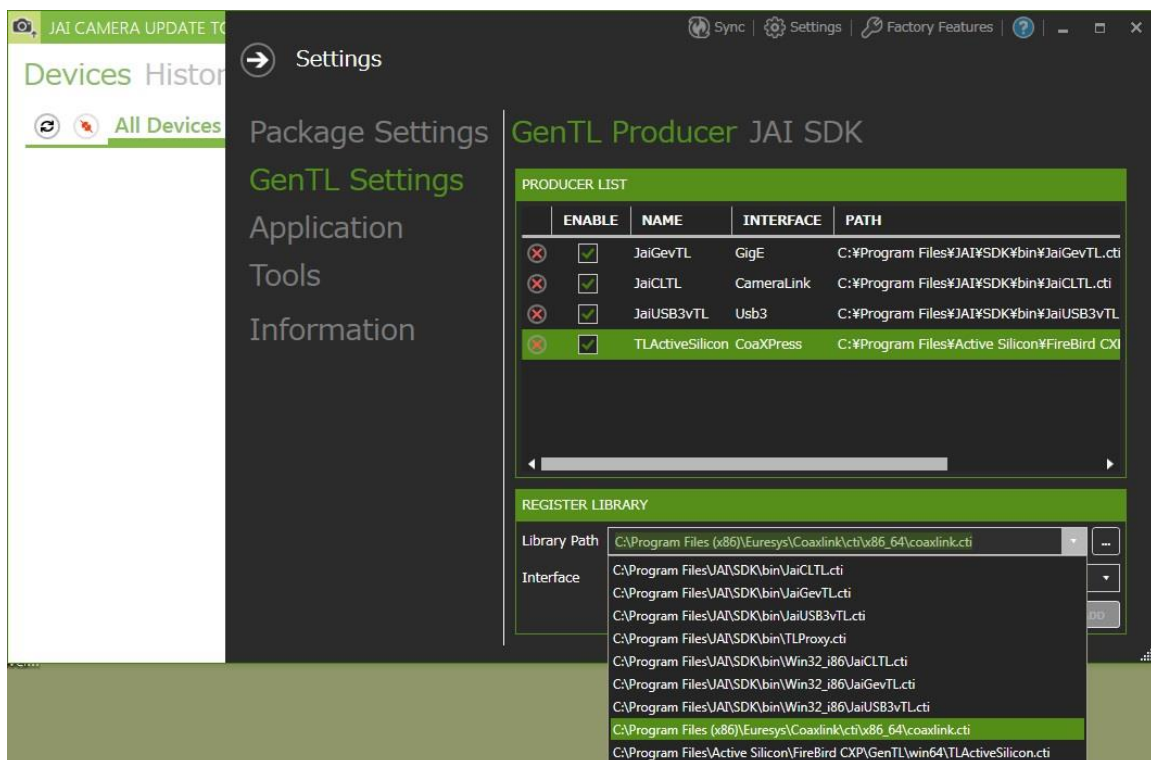
Technical Note

[Connecting to CoaXPress cameras with the JAI Update Tool]

- For CoaXPress cameras you must make sure that a GenTL producer is available to handle the update. Click “GenTL Settings”; you should see paths listed for GigE, Camera Link, and USB3 in the “Producer List”. For CoaXPress you may need to tell the Update Tool where the *.cti file for your card manufacturer is located.



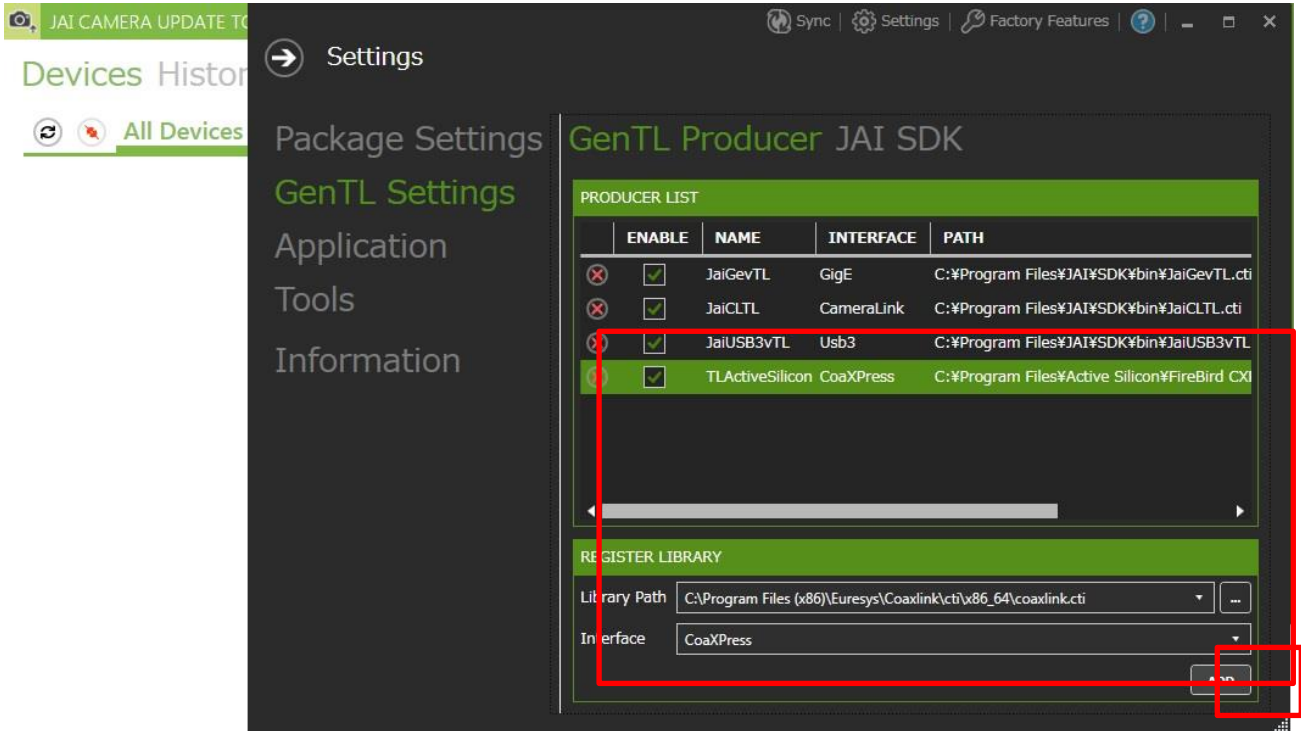
- If you do not see your CoaXPress interface card in the Producer List, select CoaXPress as the interface in the “register Library” section. Then click the pull down button of “Library Path”. The Update Tool will scan your PC and present to you the paths for possible cti files. After searching, choose the right one for your CoaXPress card.



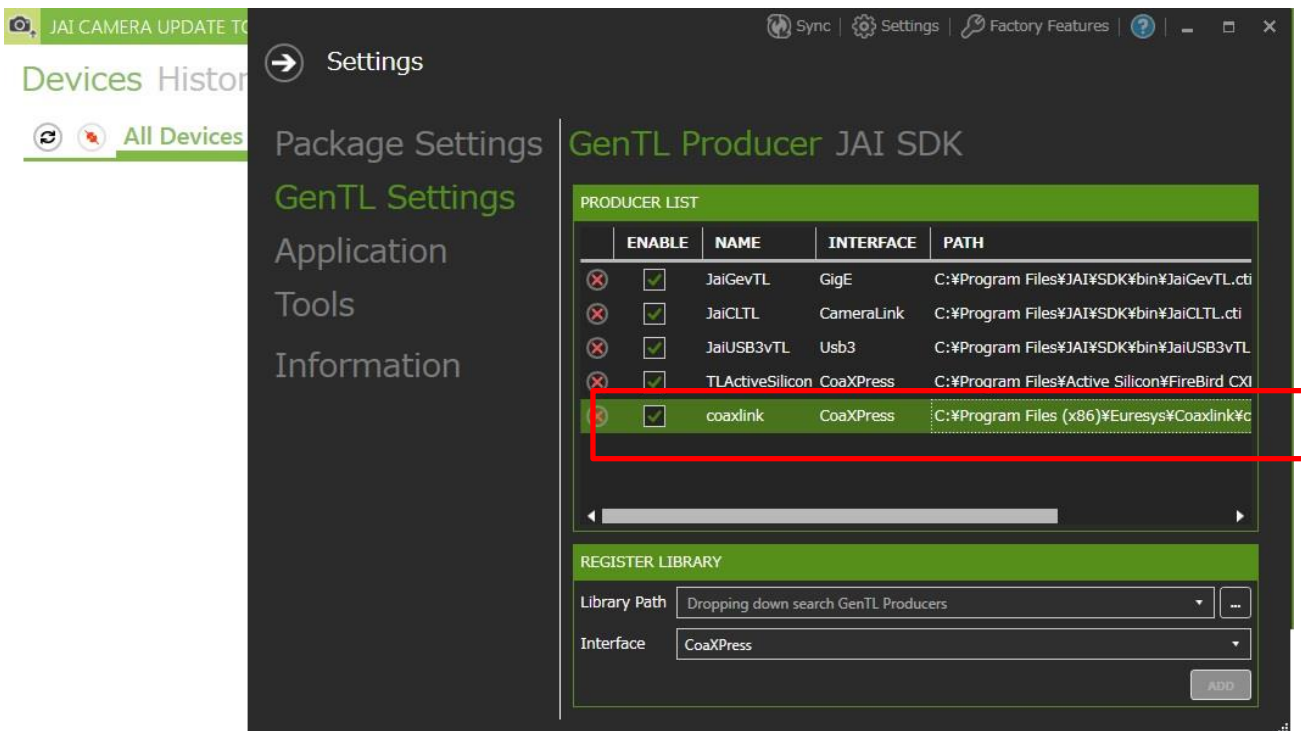
Technical Note

[Connecting to CoaXPress cameras with the JAI Update Tool]

- Click "ADD" to add it to the Producer List.



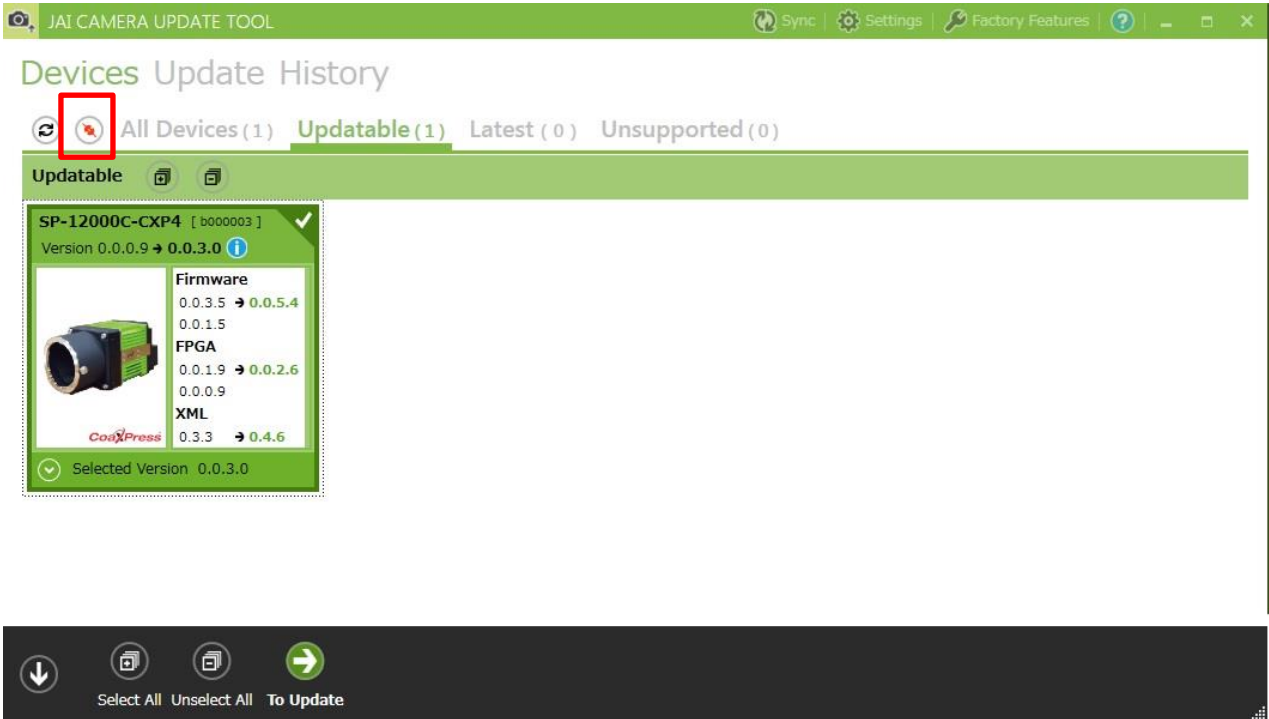
- It will now be included in the Producer List as shown below. Make sure the "Enable" box is checked.



Technical Note

[Connecting to CoaXPress cameras with the JAI Update Tool]

10. If you haven't already done so, connect your camera to the PC and make sure it is powered up. Click the refresh button, and the camera will appear in the "Updatable" list.



You are now ready to update your CoaXPress camera. Select the camera and click "To Update" to send it to the updating process. Contact JAI support or your local provider if you have any additional questions.

End.