



See the possibilities

User's Manual

SW-2000T-CXP2 SW-2000Q-CXP2

*3CMOS and 4CMOS High Speed Color
CoaXPress Line Scan Cameras*

CXP 1.1 and 1.0

Document Version: 1.3
Date: May, 2015

File: Manual_SW-2000T_and_Q-CXP2_rev_1.3.docx

Notice

The material contained in this manual consists of information that is proprietary to JAI Oy, Finland and may only be used by the purchasers of the product. JAI Oy, Finland makes no warranty for the use of its product and assumes no responsibility for any errors which may appear or for damages resulting from the use of the information contained herein. JAI Oy, Finland reserves the right to make changes without notice.

Company and product names mentioned in this manual are trademarks or registered trademarks of their respective owners.

Warranty

12 months from date of delivery, 4 months for repairs covering the work and parts at the factory.

Certifications

CE compliance

As defined by the Electromagnetic compatibility requirements of Directive 2004/108/EC of the European Parliament and of the Council, JAI Oy, Finland, declares that SW-2000T-CXP2 and SW-2000Q-CXP2 complies with the following provisions:

EN 61000-6-2 (2005), EMC immunity
EN 61000-6-4 (2007), EMC emissions

FCC

This equipment has been tested and found to comply with the limits for a Class B digital device, pursuant to Part 15 of the FCC Rules. These limits are designed to provide reasonable protection against harmful interference in a residential installation. This equipment generates, uses and can radiate radio frequency energy and, if not installed and used in accordance with the instructions, may cause harmful interference to radio communications. However, there is no guarantee that interference will not occur in a particular installation. If this equipment does cause harmful interference to radio or television reception, which can be determined by turning the equipment off and on, the user is encouraged to try to correct the interference by one or more of the following measures:

- Reorient or relocate the receiving antenna.
- Increase the separation between the equipment and receiver.
- Connect the equipment into an outlet on a circuit different from that to which the receiver is connected.
- Consult the dealer or an experienced radio/TV technician for help.

Warning

Changes or modifications to this unit not expressly approved by the party responsible for FCC compliance could void the user's authority to operate the equipment.

- Contents -

1	General	5
1.1	Camera nomenclature	5
2	Main features	6
3	Connectors and mounting.....	7
3.1	Locations.....	7
3.2	Connector panel and indicators.....	8
4	Input and output	10
4.1	CXP BNC connectors.....	10
4.2	CoaXPress output modes	10
4.3	CXP revision	10
5	Operation and functions	11
5.1	Introduction	11
5.1.1	Image sensor	11
5.1.2	Line image processing.....	12
5.2	Operating Modes.....	12
5.3	DSNU Corrector	12
5.4	Digital offset and gain stages.....	12
5.5	Test Pattern Generator.....	15
5.6	Flat Field Corrector, FFC.....	15
5.7	Optical Corrector (OC).....	16
5.8	Color Selector	16
5.9	Regions of interest, ROI	16
5.10	Binning	16
5.11	Reversed readout direction	16
5.12	CoaXPress interface.....	17
5.12.1	Selection of the revision (CXP 1.0 or 1.1).....	17
5.12.2	Link modes.....	17
5.12.3	ECT test modes.....	18
5.13	Ethernet interface.....	18
5.14	Firmware updates	19
5.14.1	MCU firmware update	19
5.14.2	FPGA firmware update	20
6	Command line interface	21
6.1	Connecting via Telnet	21
6.2	Entering the commands	21
6.3	Command Format.....	22
7	Description of commands	23
7.1	Group A: General settings.....	25
7.1.1	MODE - select camera operating mode	25
7.1.2	NET - network settings	25
7.1.3	Saving and restoring the capture settings	28
7.2	Group B: Commands affecting exposure.....	30
7.2.1	SENSOR - selects the quantum well size and analog gain	30
7.2.2	LINE PERIOD and LINE RATE	31
7.2.3	LINE CTRL - Exposure Control	32
7.2.4	LINE IT - integration time.....	34
7.2.5	GAIN - digital signal gain.....	35
7.2.6	OFFSET - output offset	36
7.2.7	FFC - flat field correction	37
7.2.8	OC - Optical Corrector	38
7.3	Group C: Commands affecting image output format	39
7.3.1	CXP FORMAT - CoaXPress transmission format	39
7.3.2	COLOR SEL - Select the colors for output	39
7.3.3	READOUT - pixel readout direction	40

7.3.4	ROI - regions of interest	41
7.3.5	BINNING - paring of pixels	42
7.3.6	ACQ - start and stop of acquisition.....	42
7.4	Group D: Utilities	43
7.4.1	HELP or '?' - list of commands	43
7.4.2	VER - camera information	43
7.4.3	STATUS - camera information and settings	43
7.4.4	TEST - test patterns	43
7.4.5	REBOOT - restart the camera	45
7.4.6	FIRMWARE UPDATE - initiate the MCU update.....	45
8	Summary of commands.....	46
9	Software tools for camera communications	50
9.1	JAI Sweep Ethernet Tool	51
9.2	Internal web server	53
10	External dimensions	54
11	Specifications	55
11.1	Operating range.....	55
11.2	Common properties	56
11.3	Performance per selected sensor mode	57
11.4	Spectral response.....	58
12	Change History.....	59

1 General

The JAI® Sweep+ Series SW-2000T-CXP2 and SW-2000Q-CXP2 are CMOS line scan cameras based on a custom-made 2048 pixel imager with large square pixels of 20 µm for high responsivity. They operate at a rate of up to 80,000 scans per second.

A beam splitter (prism) divides the incoming visible range light either into three or four outputs: red, green and blue in the 3CMOS model and red, green, blue and infra-red in the 4CMOS model. Identical imagers are positioned with high accuracy to detect these bands. The structures use common optical axis imaging, where the color components are all recorded at the same time and seen from the same angle.

Both models output digital data in 8-, 10-, or 12-bit per channel formats, via one or two CoaXPress (CXP) Links up to 6.25 Gbps each (approved up to 3.125 Gbps, two links). The camera is configured via CXP interface using GenICam™ (a generic programming interface for machine vision cameras) or via a 10/100 Mbps Ethernet port using an industry standard RJ-45 connector.

Special JAI lenses attach directly to the camera. An F-mount lens adaptor is the default. Others can be added per request.

1.1 Camera nomenclature

The standard camera composition consists of:

SW-2000T-CXP2 camera body with F-mount	x 1	or
SW-2000Q-CXP2 camera body with F-mount	x 1	
		and
Lens mount/sensor protection cap	x 1	

In the model number of the camera, SW stands for "Sweep+" Series, 2000 represents the resolution "2048 pixels", I stands for "Tri-channel", Q stands for "Quad-channel", and CXP2 stands for "CoaXPress" interface with two connectors.

2 Main features

- 3CMOS or 4CMOS line scan camera with 2048 pixel resolution
- Beam splitter prism
- Color switch to link sensors to output channels
- Normal or reversed pixel readout direction
- Binning
- Regions of interest (ROI)
- Pixel size: 20 μm , square
- Selectable Quantum Well size: 60k or 360k electrons
- Selectable internal clock rate
- Maximum scan rate: 80,000 lines per second
 - approved up to 69,000 lines per second with 4CMOS output and all the 2048 pixels
- CXP data interface
 - Two BNC connectors
 - One or two coaxial cables
 - One or two links
 - 8, 10, or 12 bits per pixel
 - Supported CXP frequencies: 1.25G, 2.5G, 3.125G, 5G and 6.25G
 - approved up to 3.125G
- DSNU correction as factory default
- Flat field correction (FFC)
- Test pattern generator for set-up and troubleshooting
- Lens mount: no mount or F-mount (default)
- DC input voltage via CXP cable
- Ethernet port for
 - Control and monitoring
 - Firmware updates
 - Download of files from camera (internal web server)
- Short ASCII commands for set-up via Ethernet using the Telnet protocol
 - Windows® user interface
- GenICam™ compatible (JAI SDK, etc.)

3 Connectors and mounting

3.1 Locations

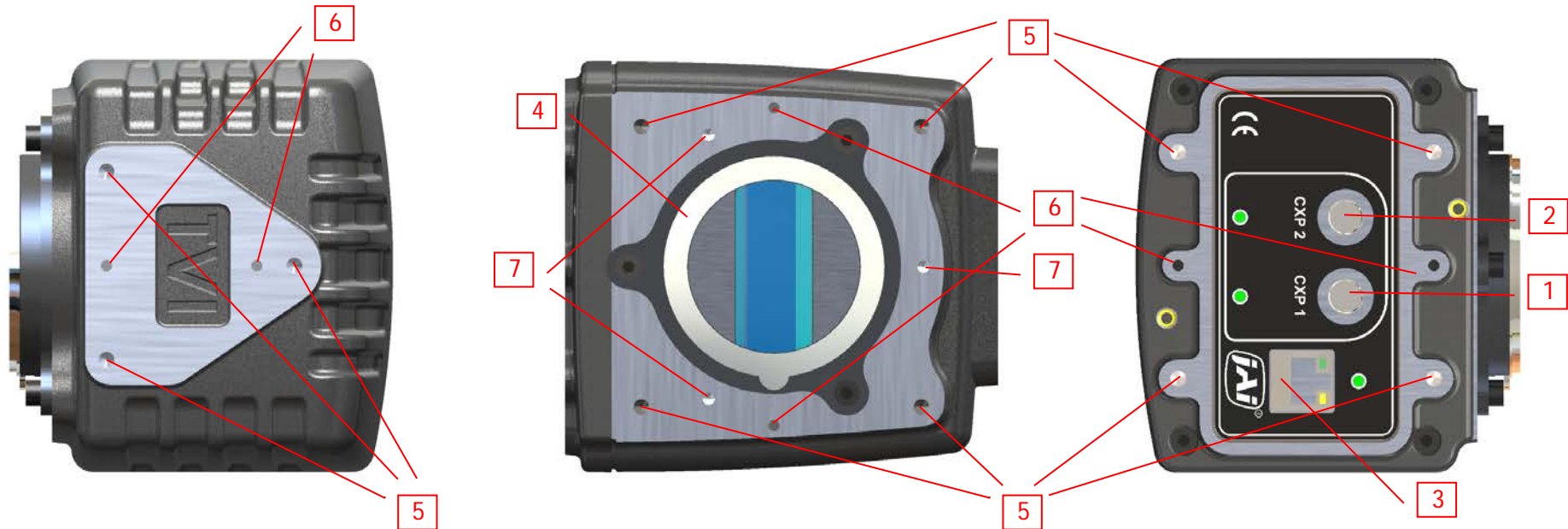


Fig. 1. Location of external features

- 1 CoaXPress connector for single link operation and power input.
- 2 Second CoaXPress connector for dual link operation and power input.
- 3 Ethernet connector.
- 4 Lens mount.

- 5 Mounting holes, M5, depth 5 mm.
- 6 Guide pins, 3.0 mm.
- 7 -- do not use for new designs --

Note: Both the CE and FCC approvals require that the camera chassis is grounded. This will typically happen when the camera is mounted using any of the mounting holes. Additionally, it can be secured by connecting a copper cable of 10 mm² or thicker to the electrical system ground.

3.2 Connector panel and indicators

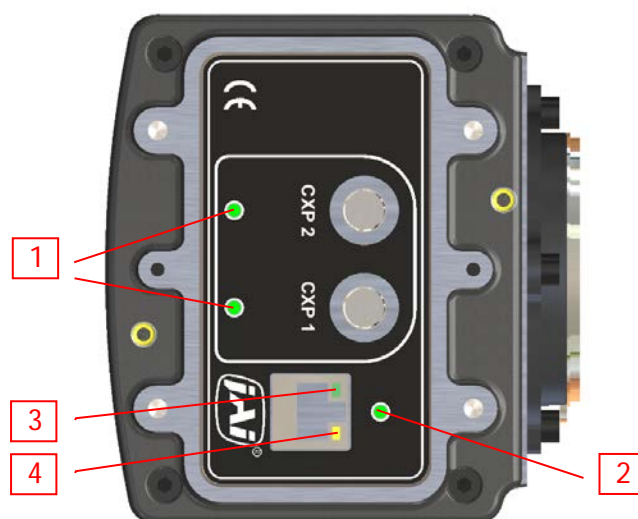


Fig.2. Connector panel

1. CXP LEDs

Two multi-color LEDs with the same indications. The camera always boots up using only the first CXP link and then possibly activates the second one, too, except in the CXP1.0 mode, where it boots up according to the number of the links that was saved by the 'cxp config' commands.

● **Orange (steady)**

CXP is booting up.

✱ **Red (flashing slowly)**

Power ON. Not yet connected.

✱✱/✱✱ **Green/Orange (Flashing rapidly)**

Connection detection in progress, PoCXP active.

✱✱ **Orange (Flashing rapidly)**

Connection detection in progress, PoCXP not in use.

● **Green (steady)**

Device connected, but no data is transferred.

✱✱ **Green (flashing rapidly)**

Device connected. Data is being transferred.

✱✱ Green/Orange (flashing slowly)

Connection test packets being sent.

✱✱✱ Green/red/orange (flashing slowly)

Test mode for compliance.

✱ Red (red pulse)

Error during data transfer.

2. Status LED

A multi-color LED with the following functions:

● Green (steady)

Normal operation

✱ Green (flashing slowly)

Busy.

✱✱ Green (flashing rapidly)

Performing firmware update or waiting for a firmware update to start.

● Orange (steady)

Initializing

✱✱ Orange (flashing rapidly)

MCU firmware update in progress.

Do not disconnect the Ethernet cable.
Do not switch off the power.

● Red

Internal error

3. Ethernet Link LED

● Green (steady)

Connected to an active network device. This indicates the existence of a physical link only. It does not indicate a valid TCP/IP network configuration.

4. Ethernet Status LED

✱ Yellow (flashing)

Activity indicator. Blinks shortly during data transfer.

4 Input and output

4.1 CXP BNC connectors

Both connectors connect to one single point-to-point, coaxial, 75 Ω cable to output image data, communicate with the camera and to input power. Please refer to official standard (www.coaxpress.com) for more information on the cabling solutions. Each cable connects all the related grounds together: electrical zero of the internal electronics to the chassis of the camera and then via the shielding of the cable to the electrical zero of the other end, which is then often connected to system ground via its chassis.

4.2 CoaXPress output modes

Bit depths of 8, 10, and 12 are supported. Cameras operate internally with more than 12 bits. All blanks are electrically zeroes. The camera can be set to use only one connector or both.

4.3 CXP revision

The camera supports either revision 1.0 or 1.1. Default setting is for rev. 1.1. The revision can be selected by writing to the CXP bootstrap register 0x4. The value 0x00010001 corresponds with CXP1.1, while value 0x00010000 is written to use CXP1.0 after next boot-up.

5 Operation and functions

5.1 Introduction

5.1.1 Image sensor

The SW-2000T-CXP2 and SW-2000Q-CXP2 are built around a beam splitter prism and identical, high performance CMOS line scan image sensors, which each convert the light collected by each pixel into electrical charge. The amount of charge generated in each of the individual pixels is basically directly proportional to the amount of light they receive.

The sensor has two options to store the charge at each pixel. These are called Quantum Wells. The smaller well can hold about 60,000 electrons (60 ke⁻), while the larger has capacity for 360 ke⁻. The larger well should be used whenever feasible as it provides the best image quality due to higher dynamic range and better signal-to-noise ratio (SNR), but also requires about six times the light for the same response.

SNR is limited by the shot noise of the light itself and thus it is beneficial to collect as many photons (light) as possible. The smaller well can be used to provide about six times as high response to light, but with the cost of lower SNR and dynamic range.

Due to internal timings and processing there is one inactive period of 1 to 2 μ s per each imaged line when the received light is not used. Thus, the maximum time the light generated charge is integrated, is always slightly shorter than the line period.

Correlated Double Sampling (CDS) is used for sampling the charge voltage and the reset level to find the difference, which is then digitized into more than 12 bits and sent out of the sensor for processing. An analog gain factor of 2 can be applied to the above mentioned difference regardless of the well size. The selection is included in the SENSOR command syntax.

Please note that these cameras are not designed for low light conditions, but for high image quality, which always requires a reasonable amount of light to be available.

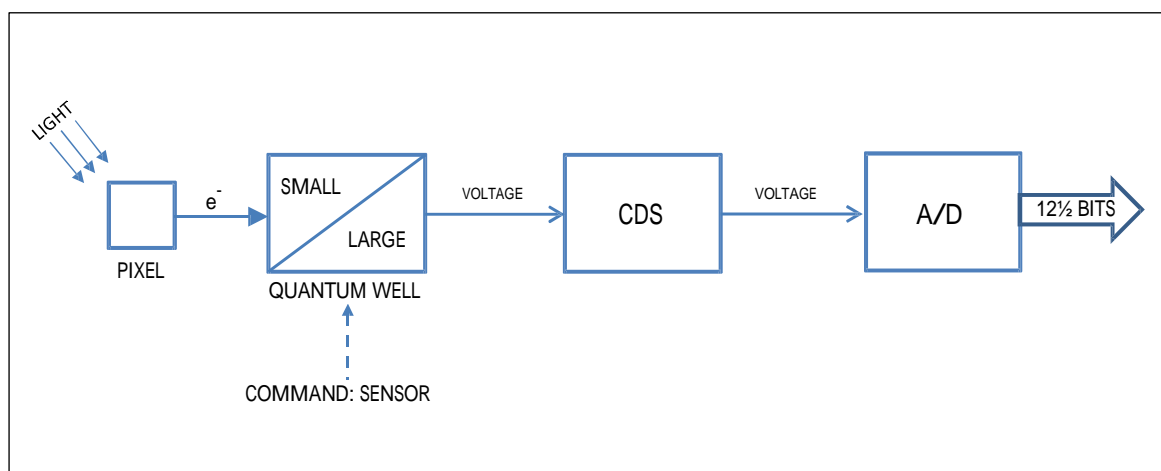


Fig.3. Sensor block diagram.

SW-2000T-CXP2 and SW-2000Q-CXP2

5.1.2 Line image processing

The output data from the imager is buffered for further processing to be then finally sent out of the camera via the CoaXPress interface. The processing chain is controlled by user accessible commands. The DSNU corrector is calibrated individually for each camera at the factory and always in use with fixed settings.

The scan rate and the integration of light within each line period can be controlled either by the CXP trigger, internal timers, or a combination of these.

Serial communication channels are used to control and monitor the camera. Both the standard CXP communication link as well as the Ethernet connection can be used for the same purpose and even at the same time. Some functions are only supported via Ethernet.

5.2 Operating Modes

The camera can be configured to offer several operating modes that are fundamentally different from each other. The operating mode is configured upon start-up and can only be changed by issuing a new mode selection command and rebooting the camera.

5.3 DSNU Corrector

DSNU (Dark Signal Non-uniformity) describes the pixel-specific differences of response in dark, while PRNU (Photo Response Non-uniformity) respectively describes the pixel-specific differences of response to equal amounts of light falling onto all the pixels. Both are basic sensor- and pixel-specific imperfections, which can be characterized and minimized. DSNU is corrected already during production. Users may use the FFC function to further adapt the camera into existing lighting conditions, if necessary.

5.4 Digital offset and gain stages

This block first shifts the digital pixel value up or down and then applies a digital gain. The result is limited to stay between zero and the maximum digital value. Gain values lower than the default 1x may cause the maximum output value to be lower than the maximum of the range in use.

The offset block is a direct subtraction or addition. It does not define the target value for dark response and has no feedback loop. That is why the gain block, which is simply a digital multiplier, will also change the offset level, thus possibly causing a need to readjust the offset value.

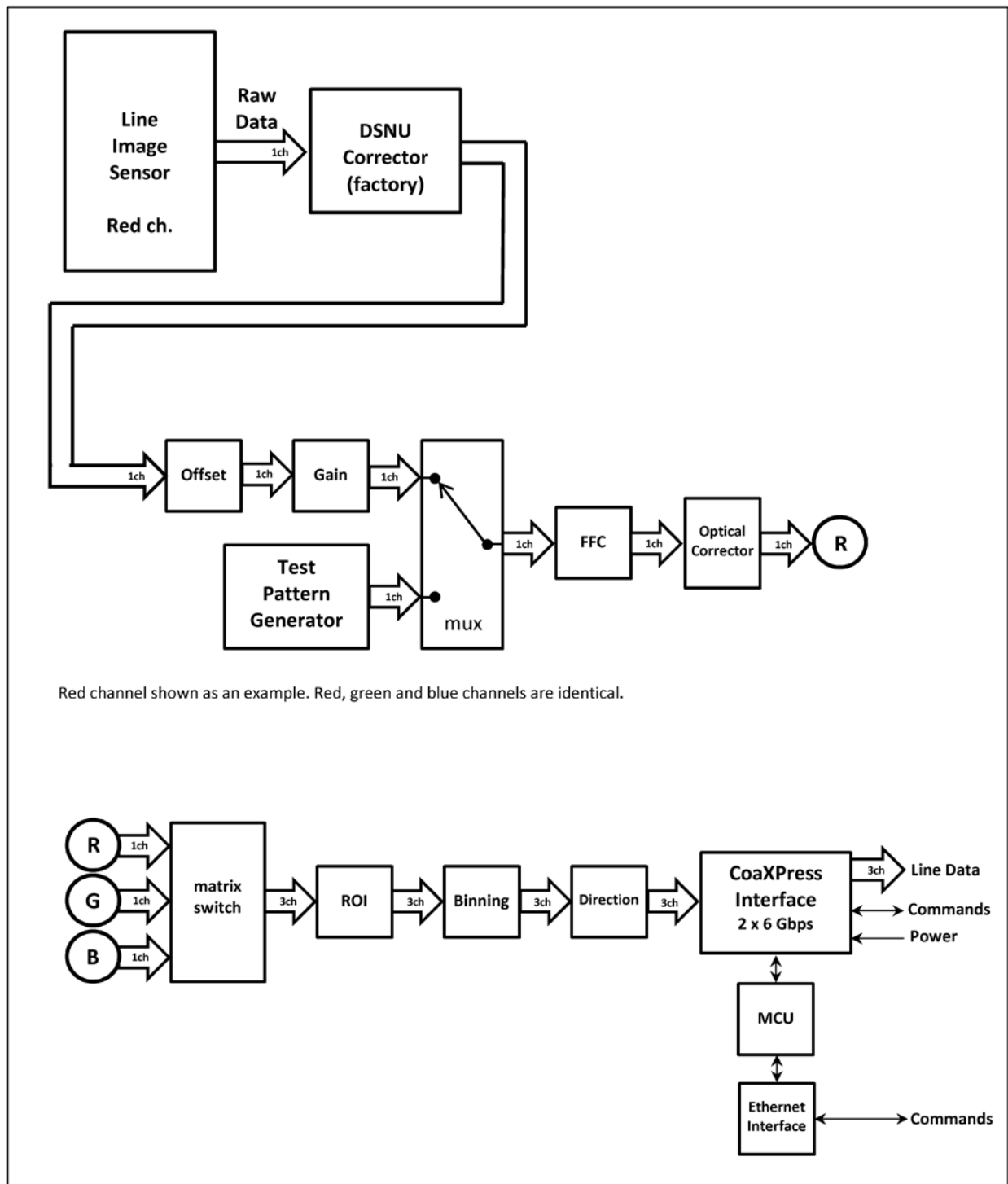


Fig.4. Line image processing block diagram. 3CMOS (approved up to 2 x 3 Gbps).

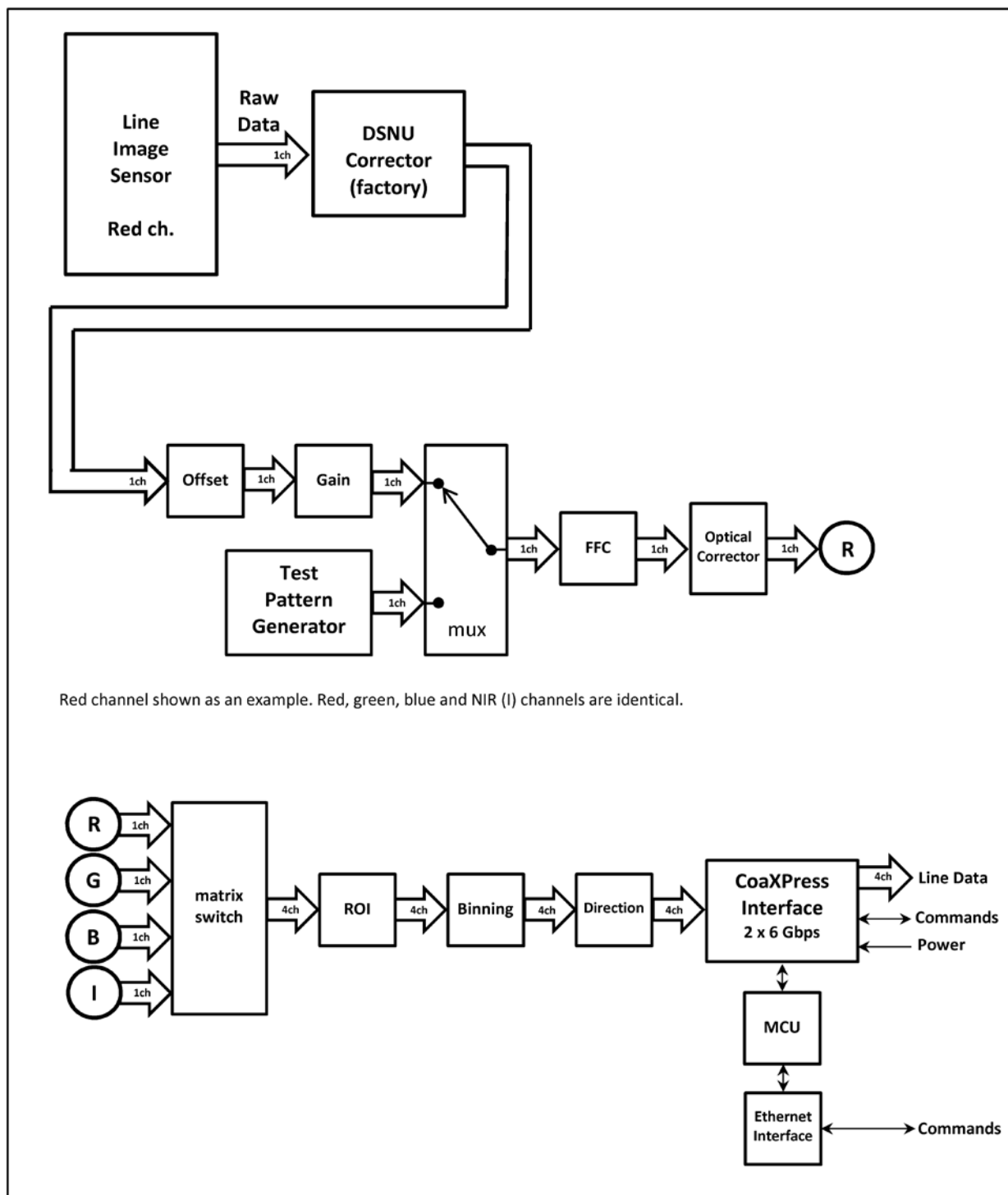


Fig.5. Line image processing block diagram. 4CMOS (approved up to 2 x 3 Gbps).

5.5 Test Pattern Generator

The cameras can send out five test patterns instead of the real imaged lines for purposes like interfacing and problem analysis. The patterns replace the image data and can thus be used also to test the following blocks. Each channel can be individually set to any of the patterns or to show the real image data. Original, full patterns are available after switching off the FFC, ROI and binning. Test data is also affected by the readout direction selection.

5.6 Flat Field Corrector, FFC

Factory calibrated DSNU corrector minimizes pixel-specific differences in darkness. There is no need to correct the PRNU as a factory setting as it is less than the noise.

Real applications only rarely can provide equal amounts of light for all pixels. This is caused mainly by effects like uneven distribution of light (light profile) or properties of lenses like vignetting. Pixels at the center region tend to get more light, while the intensity decreases towards both ends of the line image sensor.

The compensation method called Shading Correction results in a flat, equal response to light under the same conditions in which the calibration routine was run. It is generally thought of as a coarse correction to regionally scale or gain the pixel responses without paying attention to any pixel-specific differences. Also, generally, a method called Flat Field Correction (FFC) is used for operations where a similar correction is done more precisely and for each pixel individually. The correction typically uses a 2-point linear method, where both the dark and bright level pixel responses are equalized making it possible to have uniform response on all light levels within the operating range of the camera. This would in fact be a complete, single routine to perform DSNU, PRNU and Shading Corrections all at the same time, but the corrections are separated in this implementation. DSNU correction is preset at the factory. Shading correction is replaced by FFC, which operates assuming a fixed dark reference level and includes the PRNU correction.

The FFC unit scales the pixel values by factors that are calculated by imaging a calibration target in order to produce a uniform, flat response under the same conditions as where the calibration routine was run. This can either be done individually for each channel or with one common target level, which will result in white balance.

The dark reference is fixed already at the factory. Bright references are taken by averaging the lines that were imaged from the calibration target.

5.7 Optical Corrector (OC)

This is a digital compensator to spatially shift imaged pixel values to match with the reference channel pixel positions with the goal to remove effects caused by chromatic aberration.

The camera contains a list of pre-evaluated lenses and their imaging parameters like the range of distances and field of view over which that correction is valid. Users can select any correction on the list or create and add their own. The difference is that the factory made correction use a high degree polynomial for best match also with non-linear increase of chromatic aberration when going from the center of each line towards the beginning or end of each line, while the user created corrections will only be linear. Please contact JAI for instructions if you need to make your own correction.

5.8 Color Selector

The color selector is a switch matrix to connect any of the input channels to any or multiple of the output channels. It is 3 by 3 on the 3CMOS and 4 by 4 on the 4CMOS model. Additionally, the 4CMOS model includes the possibility to select any of the three channels and send them out as any of the formally 3-channel RGB formats.

5.9 Regions of interest, ROI

This block can be used to select up to four sections of pixels to be used as one combined line of pixels. The purpose is to reduce the amount of data and to remove unnecessary regions.

5.10 Binning

Neighboring pixels can be digitally added or averaged as pairs. The resulting larger pixels are then sent out as one. The resolution as well as the number of pixels will be half. The goal is to have larger pixel area either to increase the response or to reduce noise.

5.11 Reversed readout direction

This function enables reading of the pixel values in correct order in cases where it is not practical to install the camera to follow the intended imaging direction.

5.12 CoaXPress interface

CoaXPress (CXP) is a communication standard for imaging applications. It provides high speed image data, communications and control, triggering and power input all over a single coaxial cable as one CXP link. The transmission is point to point and possible up to distances exceeding 100 meters at low link speeds. Multiple links can be used in parallel. The first link acts as the master and must always be connected. The so called Uplink for communications and control runs always at the constant rate of 20 Mbps.

5.12.1 Selection of the revision (CXP 1.0 or 1.1)

The camera operates according to revision 1.1 as default, but supports also rev. 1.0. The revision is selected by writing to the bootstrap register defined in the standard itself. The new selection is automatically saved and taken into use at next boot up. The host should check the setting during initialization and change it if necessary.

5.12.2 Link modes

The camera always boots up with one link at speed of 3.125G to negotiate with the host on the transmission properties if used in CXP1.1 mode, which is the recommended and default option. The same link speed is used also in the older CXP1.0 mode, but the initial boot up will use both links if the camera was set for two cable operation (next table).

The host is typically a frame grabber board and acts as the master here. It can try any of the standard link modes or read the preferred link mode that the camera has been set to show. The host can then change the link speed, but it cannot change the number of links. The camera can change the number of its links only by the 'cxp config' command.

The preferred link mode of the camera can be preset to be one of the ten options listed in the table below. The command 'cxp config' is available only via the Ethernet connection as a telnet command - not via GeniCam™. The given values are immediately saved, but will not become effective until the next restart. If the new mode is slower, please make sure that the line rate value saved by the 'CS SAVE' command is not too high.

SW-2000T-CXP2 and SW-2000Q-CXP2

Command	Link mode	Max. line rate. Use of ROI and BINNING may raise the limits. The selected Operating Mode (see 7.1.1) is the absolute limit.	
cxp config 1 1	one link, 1.25G	3CMOS: 18/14/12 kHz for 8/10/12 bits per channel 4CMOS: 13/11/9 kHz for 8/10/12 bits per channel	
cxp config 2 1	one link, 2.5G	3CMOS: 36/29/24 kHz 4CMOS: 27/22/18 kHz	
cxp config 3 1	one link, 3.125G	3CMOS: 46/36/30 kHz 4CMOS: 34/27/23 kHz	
<i>cxp config 5 1</i>	<i>one link, 5G</i>	3CMOS: 73/59/49 kHz 4CMOS: 55/44/36 kHz	<i>NOTE: usable; not officially approved.</i> <i>NOTE: usable; not officially approved.</i>
<i>cxp config 6 1</i>	<i>one link, 6.25G</i>	3CMOS: 80/73/61 kHz 4CMOS: 69/55/46 kHz	<i>NOTE: usable; not officially approved.</i> <i>NOTE: usable; not officially approved.</i>
cxp config 1 2	two links, 1.25G	3CMOS: 36/29/24 kHz 4CMOS: 27/22/18 kHz	
cxp config 2 2	two links, 2.5G	3CMOS: 73/59/49 kHz 4CMOS: 55/44/36 kHz	
cxp config 3 2	two links, 3.125G	3CMOS: 80/73/61 kHz 4CMOS: 69/55/46 kHz	
<i>cxp config 5 2</i>	<i>two links, 5G</i>	3CMOS: 80/80/80 kHz 4CMOS: 80/80/73 kHz	<i>NOTE: usable; not officially approved.</i> <i>NOTE: usable; not officially approved.</i>
<i>cxp config 6 2</i>	<i>two links, 6.25G</i>	3CMOS: 80/80/80 kHz 4CMOS: 80/80/80 kHz	<i>NOTE: usable; not officially approved.</i> <i>NOTE: usable; not officially approved.</i>

5.12.3 ECT test modes

The camera includes a special operating mode for the Electrical Compliance Tests (ECT) of the standard. The camera will then output test mode data with the selected link speed. The new values are automatically saved and taken into use at next boot up.

5.13 Ethernet interface

The 10/100 Mbps Ethernet port interface is provided as an alternative way to communicate with the camera. Connection to Ethernet offers usual networking possibilities like remote access and connecting multiple cameras together for control and monitoring. The standard GenICam™ programming interface via the CoaXPress connection is allowed to be in use at the same time. This of course requires caution if both channels are used for changing camera settings.

Firmware updates are loaded only via this interface. Standard web browsers can be used to establish connections to the internal web server, which includes a few basic functions like downloading of some documents and supporting updates.

This port cannot be used for any actual image acquisition. Single lines (average of 32) can be slowly read out and displayed as graphs by using the JAI Ethernet Tool software.

5.14 Firmware updates

It is possible to update or change the camera firmware without opening the housing. New code is loaded in via the Ethernet port and with help of web browser user interface. There are two kinds of firmware updates: MCU and FPGA. The MCU (microcontroller unit) updates affect the user interface and high level features of the camera, while the FPGA (field-programmable gate array) updates provide enhancements for low level or hardware related functions.

The MCU update is first initiated by the command FIRMWARE UPDATE and then completed with help of the user interface that opens up by accessing the main page of the camera web server. The FPGA update is done by directly accessing the respective update page.

Caution:

Ensure that the camera receives proper power during the complete firmware update process.

A power break can potentially leave the camera in a state, where it cannot start again.

5.14.1 MCU firmware update

1. Make sure you have the correct file (.hex) for the camera model and the existing configuration available.
2. Make sure you have a working communication via the Ethernet port.
3. Make sure you have a compatible web browser and can access the main page at <http://10.10.10.10>.
4. Check and make a note of the existing configuration (telnet command: VER).
5. Save any settings that you want to keep. The camera will reboot during the process.
6. Initiate the camera by telnet command FIRMWARE UPDATE. You may still cancel the operation after this. Send command CONFIRM when asked if you want to go ahead.
7. The green LED near the Ethernet connector should now start flashing rapidly. This indicates that the camera is waiting for the new code.
8. Access <http://10.10.10.10> or refresh the page if you already were there. The user interface will let you browse for the new file (.hex) and upload it to the camera.

SW-2000T-CXP2 and SW-2000Q-CXP2



Fig.6. User interface for the MCU update.

9. You can still cancel the update here, in which case the camera will reboot once automatically. The LED turns first into steady orange color. Wait until it becomes green and steady again. You will have to make a new connection to the camera after this.
10. If you instead clicked on the upload button, this LED will continue flashing with multiple colors during the loading. **Do not interrupt the upload.**
11. The camera will then automatically reboot. The LED will first go off, then turn orange and finally green.
12. Close old communication sessions to the camera and establish new ones as needed.
13. Verify by command VER that the MCU version number has changed as intended.

5.14.2 FPGA firmware update

1. Make sure you have the correct file (.rbf) for the camera model and the existing configuration available.
2. Make sure you have a working communication via the Ethernet port.
3. Make sure you have a compatible web browser and can access the main page (<http://10.10.10.10>) already before initiating this update.
4. Check and make a note of the existing configuration. Telnet command: VER.
5. Save any settings that you want to keep. The camera must be rebooted during the process.
6. Access <http://10.10.10.10/FPGAupdate.html>.
7. Browse and open the file (.rbf). You may cancel the operation now by closing the web page. Click on Upload to proceed. **Do not interrupt the upload.**
8. The green LED near the Ethernet connector should now turn off.
9. Wait for the user interface page to change. This may take up to 3 minutes. The yellow Ethernet LED flashes when code is being loaded. This should start within the first minute.
10. Click on the 'HOME' button. The LED remains off.
11. The camera must next be rebooted. You may power cycle the camera or send the REBOOT command followed by CONFIRM.
12. Close old communication sessions to the camera and establish new ones as needed.
13. Verify by command VER that the Logic version has changed as intended.

6 Command line interface

The command line interface provides an easy, interactive way to control the camera. All commands can be given through the Ethernet interface using the Telnet protocol.

6.1 Connecting via Telnet

To connect the camera using Telnet:

- Consult your IT department to check if you can plug the camera to your local area network with the default IP address 10.10.10.10. You may change the address by using the NET IP command. Alternatively, you may configure your network card to build a direct connection to the camera.
- Connect the camera to a local area network using a twisted-pair cable. A shielded cable of category 5 or higher is recommended.
- Open a Telnet client on the computer. Two options are available from JAI. Please refer to chapter 9 of this document. Also free or commercial Telnet clients can be downloaded from various internet sites. The following Telnet clients are examples of clients tested with the Sweep+ cameras:
 - [Foxterm](#)
 - [PuTTY](#)
- Open a Telnet connection to the IP address of the camera.

6.2 Entering the commands

The commands are typed in the client console window like in any command line interface. A carriage return (ENTER) terminates the command line and transmits it to the command interpreter in the camera for parsing and execution.

If the communication is coded into a software application then each line must have a carriage return character (ASCII: 0x0D) at the end. Also, a line feed character (0x0A) may be sent after the carriage return, but it is not needed.

Please note that the response time of some commands is considerably longer. Commands like VER, STATUS, CS LOAD, CS LOAD2 and CS FACTORY RESET take almost 10 seconds to complete.

6.3 Command Format

The following notation is used for describing the command syntax:

- **BOLDFACE** indicates the fixed command word that must be typed as it is
- | A vertical line delimits alternative forms of a command
- {braces} are used to group the alternative forms delimited by the vertical line |
- <wedge brackets> are used to delimit the names of values
- [square brackets] indicate an optional part that can be omitted
- All parameters (numbers, options) must be separated by one or more spaces.
- All commands are case insensitive; **VER**, **Ver** and **ver** are all equal

Example: **LINE IT** {<time>|<value>%}

A command described using this syntax has two alternative forms. The first form takes a time as its only parameter, while the second form takes the percentage as an optional integration time. The following commands are valid examples of this:

LINE IT 12 (according to form: **LINE IT** <time>)
LINE IT 100% (according to form: **LINE IT** <value>%; the optional <time> is omitted)

When the command parameter is a physical quantity, the unit itself must not be given. For example, the integration time is set to 12 μ s but the microsecond unit is implied by the camera. It must not be typed by the user.

Some commands can be applied only to one channel at a time by giving the channel identifier as a parameter. All channels can be modified by one command by leaving the channel identifier out. The optional parameter [ch] is the specifier of the channel. It is R, G or B for 3CMOS models and R, G, B or I for 4CMOS models.

Examples:

GAIN R 1.5 set red channel gain to value 1.5
GAIN B 3.1 set blue channel gain to value 3.1
GAIN 2.8 set gain of all the channels to value 2.8

7 Description of commands

The commands can be divided into four groups:

Group A: General settings

MODE for selecting operating mode after boot-up.

NET for network settings for the Ethernet communication. The NET settings are saved automatically.

CL SERIAL set the baud rate for Camera Link communications.

CS SAVE, **CS LOAD**, **CS SAVE2**, **CS LOAD2** and **CS FACTORY RESET** for saving, loading or restoring the settings of group B and C.

Group B: Commands affecting exposure

SENSOR for selecting the quantum well size and analog gain.

LINE RATE and **LINE PERIOD** for setting the scan rate.

LINE IT for selecting the actual light integration time.

LINE CTRL for selecting the trigger source.

GAIN for setting the camera gain.

OFFSET for setting the line offset value.

FFC for Flat Field Correction.

OC for the optical corrector.

Group C: Commands affecting image output format

CXP FORMAT for setting the pixel depth.

COLOR SEL for selecting the channels for the output.

READOUT for selecting normal or reverse readout direction.

ROI for selecting Regions Of Interest.

BINNING for combining adjacent pixels.

ACQ for start and stop of acquisition.

Group D: Utilities

HELP or **'?'** for list of all commands.

VER for displaying firmware versions and camera identifiers.

STATUS to display camera information and settings.

TEST for selecting test patterns.

REBOOT for restarting the camera.

FIRMWARE UPDATE to change the MCU code.

SW-2000T-CXP2 and SW-2000Q-CXP2

The four groups will be described in detail in the following sections. Most commands display help on how to use it if a space and a question mark is added after the command, and current status of the function if the command is entered as such with no parameters.

The general principle with all the group B and C commands is that users may experiment with the settings without losing the latest, saved and working setup (exception: CS FACTORY RESET). New settings are in use, but not permanently saved, until the user decides to save them. It is always possible to return to the latest saved settings either by sending the CS LOAD, CS LOAD2 or REBOOT command or power cycling the camera.

NOTE: The CS FACTORY RESET command also saves the new values to the first memory location like the command CS SAVE.

7.1 Group A: General settings

7.1.1 MODE - select camera operating mode

The command MODE selects the operating mode that will be entered when the camera is rebooted. The names of the modes refer to the maximum line rate of each mode. If the maximum required line rate is known, this command can be used to select the most suitable option. Changing to a lower speed option may set the camera to operate internally at a slower clock rate, which will lead to lower internal temperatures and slightly increased operating temperature range.

MODE	internal clock	max. line rate
SPEED35KL	50 MHz	35 kHz, factory default
SPEED70KL	100 MHz	70 kHz
SPEED80KL	100 MHz	80 kHz

Command	Description
MODE ?	Returns the MODE setting syntax and a list of available modes to select from.
MODE	Returns the present setting of MODE.
MODE <file name>	Sets a new operating mode. Reboot required.

7.1.2 NET - network settings

The Ethernet control interface settings can be changed using the NET group of commands.

Caution: Setting incorrect network properties can cause the camera to be unreachable through the network. If this happens, please use GenICam™ via an SDK interface to reset or correct the network settings.

Command	Description
NET ?	Returns the NET settings syntax for manual/DHCP, IP address, Gateway and Subnet Mask.
NET	<p>Returns the present setting of manual/DHCP, IP Address, Subnet Mask and Gateway together with the settings after the next reboot of the camera.</p> <p>Default settings: The IP setup mode is STATIC. IP Address 10.10.10.10 Subnet mask ... 255.255.255.0 Gateway 10.10.10.1</p>

SW-2000T-CXP2 and SW-2000Q-CXP2

7.1.2.1 NET IP - set the IP address

The command NET IP sets the IP address of the camera. Default is 10.10.10.10.

Command	Description
NET IP ?	Returns the NET IP setting syntax.
NET IP	Please use command NET for settings information.
NET IP <xxx.xxx.xxx.xxx>	Sets the camera to use a static IP address xxx.xxx.xxx.xxx.
NET IP AUTO	Sets the camera to obtain a dynamic IP address using DHCP.

Caution: It is recommended to use a static IP address. If a dynamic address is selected, there is no straightforward way to determine the address assigned by the DHCP server. You may use GenICam™ via an SDK interface to search for the address.

7.1.2.2 NET MASK - set the IP subnet mask

This command sets the IP subnet mask of the camera. The command has no effect in case of using dynamic IP addressing.

Command	Description
NET MASK ?	Returns the syntax for setting NET MASK.
NET MASK	Please use command NET for settings information.
NET MASK <xxx.xxx.xxx.xxx>	Sets the camera to use an IP subnet mask.

7.1.2.3 NET GATEWAY - set the IP default gateway

The command NET GATEWAY sets the IP default gateway (default router) of the camera. The command has no effect in case of using dynamic IP addressing.

Command	Description
NET GATEWAY ?	Returns the NET GATEWAY syntax.
NET GATEWAY	Please use command NET for settings information.
NET GATEWAY <xxx.xxx.xxx.xxx>	Sets the address of the default gateway.

7.1.2.4 NET FACTORY RESET - resetting the net settings

The command NET FACTORY RESET sets the net to the factory default values.

Command	Description
NET FACTORY RESET	Resets the network settings to factory default values: The IP setup mode is STATIC. IP Address 10.10.10.10 Subnet mask ... 255.255.255.0 Gateway 10.10.10.1

7.1.2.5 NET NAME - set a name for the camera

This command gives a name for the camera. The name is listed with the VER command if a name was given. The name is not visible to the network.

Command	Description
NET NAME ?	Returns the NET NAME syntax.
NET NAME	Returns the camera name.
NET NAME <name>	Sets the name for the camera.
NET NAME DELETE	Removes the name.

7.1.2.6 NET CLOSE - close the current session

This command closes the current session immediately.

Command	Description
NET CLOSE	Ends the current Telnet session. Alternative commands are NET QUIT and BYE.

7.1.3 Saving and restoring the capture settings

This group of commands is used for saving and reloading image capture related settings as one set. Two storage locations are available for writing and reading. The third storage location is for the factory settings, which can only be loaded.

Note:
The ON/OFF status of FFC is included in both sets.
The correction data itself is the same with both sets.
There is only one common storage place for this data.

Command	Description
CS ?	List of available Capture Settings group commands.
CS	Returns the present Capture Settings.
CS SAVE	Saves the present Capture Settings to the first memory location. Loaded during reboot and power-up.
CS LOAD	Loads the stored Capture Settings from the first memory location.
CS SAVE2	Saves the present Capture Settings to the second memory location.
CS LOAD2	Loads the stored Capture Settings from the second memory location.
CS FACTORY RESET	Restores the Capture Settings to the factory values and saves them to the first memory location.

7.1.3.1 CS – show image capture settings

The command CS shows existing settings for this group of commands:

- SENSOR
- LINE RATE, LINE PERIOD
- LINE CTRL
- LINE IT
- GAIN
- OFFSET
- CXP FORMAT
- COLOR SEL
- READOUT
- ROI
- BINNING
- FFC
- OC

7.1.3.2 CS SAVE - save settings (1st set)

This command stores all the above-mentioned settings to the first location in non-volatile memory. The settings are loaded at power-up and during reboot of the camera.

7.1.3.3 CS LOAD - load settings (1st set)

This command restores all the above-mentioned settings from the first memory location of the non-volatile memory.

7.1.3.4 CS SAVE2 - save settings (2nd set)

This command stores all the above-mentioned settings to the second location in non-volatile memory.

7.1.3.5 CS LOAD2 - load settings (2nd set)

This command restores all the above-mentioned settings from the second memory location of the non-volatile memory.

7.1.3.6 CS FACTORY RESET - restore settings to factory default

This command restores the factory values for all the above-mentioned settings from the camera non-volatile memory and saves them like the command 'CS SAVE'.

Factory defaults:

Command	Factory default
SENSOR	RESPONSIVE 1
LINE RATE	10 kHz
LINE PERIOD	100.0 μ s
LINE CTRL	internal
LINE IT	100 %, (97.90 μ s)
GAIN	1.000
OFFSET	0
CXP FORMAT	RGB 8 (3CMOS) / RGBI 8 (4CMOS)
COLOR SEL	straight one-to-one connection; 'R G B' or 'R G B I'
READOUT	NORMAL
ROI	OFF
BINNING	OFF
FFC	OFF
FFC MODE	WHITE
OC	OFF

7.2 Group B: Commands affecting exposure

7.2.1 SENSOR - selects the quantum well size and analog gain

The sensor has two possibilities to collect the light generated charge. The default setting uses the smaller well size for higher responsivity. The larger well size is used for a wider dynamic range and a better signal to noise ratio, which results in more valid bits. The difference of the responsivity between the two well sizes is approximately a factor of 6. Additionally, an analog gain factor of 2 can be selected with both modes.

Command	Description
SENSOR ?	Returns the SENSOR setting syntax.
SENSOR	Returns the present setting of SENSOR.
SENSOR [ch] DYNAMIC 1	Sets the sensor into the high dynamic range operating mode. Larger Quantum Well is in use.
SENSOR [ch] DYNAMIC 2	Analog gain of 2x added.
SENSOR [ch] RESPONSIVE 1	Sets the sensor into the high responsivity operating mode. Smaller Quantum Well is in use. Default setting.
SENSOR [ch] RESPONSIVE 2	Analog gain of 2x added.

The '[ch]' is the specifier of the channel. R, G or B for 3CMOS models. R, G, B or I for 4CMOS. If no channel is given, the same setting is applied to all the channels.

7.2.2 LINE PERIOD and LINE RATE

These commands are used to set the scan rate for the internal timing generator, which is selected by the LINE CTRL INT command. A new setting will be effective even though the camera is in external timing mode. The LINE RATE is the inverse of the LINE PERIOD and if one of them is changed then the other will be changed as well.

The LINE PERIOD command specifies the line interval in microseconds. The valid range is from 12.5 to 100000.0. The line period can be changed with the resolution of 0.1 μ s. However, internal rounding can take place. In this case, the resulting rounded line period length is returned as the response to the command. The response has a resolution of 0.01 μ s.

The LINE RATE command is used for specifying the scan rate as lines per second. The valid range is from 10 to 80,000. The line rate can be specified in steps of 0.1 Hz. However, internal rounding can take place. In this case, the resulting rounded line rate is returned as the response to the command.

Command	Description
LINE PERIOD ?	Returns the command syntax and the available range.
LINE PERIOD	Returns the present line period .
LINE PERIOD <line period>	Sets the line period as microseconds (μ s) in steps of 0.1. Default: 100.0.
LINE RATE ?	Returns the command syntax and the available range.
LINE RATE	Returns the present line rate. A value 8888.0 Hz indicates that the CXP Link speed was changed and is too slow to support the line rate in use or the rate loaded from memory.
LINE RATE <line_rate>	Sets the line rate as lines per second in steps of 0.1 Hz. Default: 10000.0.

Please note:

The settings made by commands MODE, CXP CONFIG, CXP FORMAT, BINNING and ROI may affect the available range of values.

If the status inquiry 'LINE RATE' returns the value 8888.0 Hz, the camera has automatically dropped the line rate to a safe value due to a too slow CXP Link speed that has been set after the faster line rate was already once accepted. This can happen also when loading the factory settings or the user settings from the first (CS LOAD) or the second location (CS LOAD2).

7.2.3 LINE CTRL - Exposure Control

The camera has three exposure control modes: internal, mixed, and Pulse Width Control (PWC), which uses only one input signal to control both the line rate as well as the effective time to integrate light.

The time when the exposure of one line ends and the exposure of the next line starts (change of line) initiates a procedure that is common to all the modes. That includes stopping the integration of light - or actually the collecting of the light generated electrons to the selected Quantum Wells (one per pixel), sampling the respective charge voltages, and starting the conversions into digital values to represent the amount of light that each pixel collected.

At the same time, the new line period starts and the camera starts to process the data that in fact originates from the line period that occurred two periods earlier. There is a constant delay from the end of each scan to the time where the first pixel value comes out of the camera. The user always gets exactly one line of data for each request of a new line, but due to the internal delay, it cannot always be the next line after the request. No lines though are lost in the process.

It is possible to limit the amount of time that light is effectively collected (integration time) within each scan period by using an electronic shutter function. The integration times of all the channels are aligned with each other to optimise imaging of all the lines the same time.

Two general principles apply to all the modes. If the line period is too short, the request to change the line is ignored. The camera will then wait for the next valid request. The second principle is that if the integration time on any channel is too long in respect to the line period, it will be cut short at the end of the line period. Information on the existing conditions is available by the command LINE.

The source for these events can either come from the CXP trigger, or from internal timers, or as a combination of these two.

The CXP trigger is generated by the host internally or based on its input signals. It is forwarded to the camera as a transmission packet. In order to provide the camera a real time trigger, the trigger packet transmission over the coaxial cable has the highest priority. The time delay value between the trigger event and the trigger packet being sent is coded into the packet itself. The camera uses these values to recreate the trigger event with low jitter and a fixed latency.

Command	Description
LINE CTRL ?	Returns the command syntax.
LINE CTRL	Returns the present line control setting.
LINE CTRL INT	Line rate and integration times are controlled by the camera. Default setting.
LINE CTRL MIX	Line rate is controlled externally by the CXP trigger. Integration times are controlled internally by the camera.
LINE CTRL PWC	Line rate and the common integration time are controlled externally by the CXP trigger.

Command	Line period control	Integration time	Related commands
LINE CTRL INT	internal	internal	LINE RATE or LINE PERIOD, LINE IT and LINE
LINE CTRL MIX	external	internal	LINE IT, LINE
LINE CTRL PWC	external	external	LINE

7.2.3.1 Internal exposure control (command: LINE CTRL INT)

The scan rate is defined either by the LINE RATE or the LINE PERIOD command, which are inverse of each other. The LINE IT command (LINE Integration Time) sets the length of the exposure time per channel during each scan. Each Line IT must be shorter than the Line Period. If the Line Integration time is commanded to be longer than the Line Period then the integration time on those channels will stop at the same time as the line period ends.

The actual integration starts at the beginning of the line period. If the integration times have differences between the channels, this would respectively cause misalignment between the channels in the final images in the horizontal direction, which is perpendicular to each imaged line, unless this is compensated. All SW-2000T and SW-2000Q models automatically center the integration times. The longest time period is started at the beginning of each line period. The midpoints of all channels occur the same time with the midpoint of the longest duration.

The Internal exposure mode cannot be synchronized to an external event. If external synchronization is needed then the MIX or the PWC mode should be used.

7.2.3.2 Mixed mode exposure control (command: LINE CTRL MIX)

The line period is now the time between two consecutive rising edges of the CXP trigger signal. The integration times are controlled internally by the command LINE IT per each channel. The command 'LINE IT [ch] <value>%' is not available in this mode.

This mode is useful in situations where the integration times need to stay constant regardless of variations in the line frequency. Each scan would then be triggered from some external source, while the actual integration times of light would be programmed in advance as absolute values. The maximum integration times are always about 2 μ s shorter than the line interval, which is common to all the channels. If any integration time is too long, it will be limited to the maximum, in which case it will vary according to the line trigger input (CXP trigger) frequency. The camera monitors this frequency. Individual, exact values can be read out by the command LINE.

All the integration times are internally automatically centered the same way as in the INT mode to minimize color mismatch.

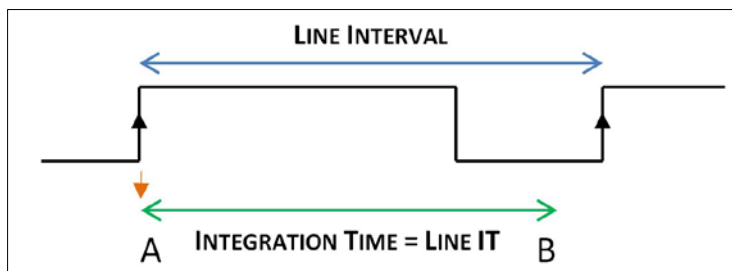


Fig.7. Line timings in mixed control mode. The LINE IT shown here can be any of the RGB or RGBI channels. Integration times are centered to occur at the same position.

7.2.3.3 PWC mode exposure control (command: LINE CTRL PWC)

Both the line period and integration time are controlled externally by the CXP trigger. The integration time is same for all the channels. The time between two falling edges defines the line period. Integration starts at the rising edge and stops at the end of the line period. Thus, effectively the exposure time is equal to the HIGH period, while the length of the period equals the line rate.

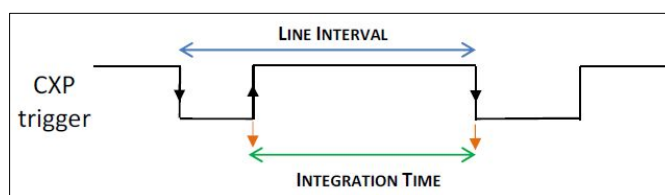


Fig.8. Line timings in PWC control mode.

7.2.4 LINE IT - integration time

This command is used to control the integration time (effective exposure time) for each line. The timing can be specified either as an absolute time in microseconds, or as percentage of the line period. The integration time given as percentage of the line interval is recalculated automatically when the line rate changes. The integration time set in absolute units remains constant, unless the line rate setting forces the camera to shorten it.

Command	Description
LINE IT ?	Returns the command syntax and the available range.
LINE IT	Returns the present Line Integration settings.
LINE IT [ch] <time>	Sets the integration time to <time> in microseconds for the selected channel. The <time> is a numerical value within the range 2.00 to 99998.50 with 0, 1 or 2 decimal places.
LINE IT [ch] <value>%	Sets the integration time to <value> per cent of the maximum integration time for the selected channel, where <value> is a numerical value between 0.10 % and 100.00 % (default) with 0, 1 or 2 decimal places. Not available in the LINE CTRL MIX mode.

The '[ch]' is the specifier of the channel. R, G or B for 3CMOS models. R, G, B or I for 4CMOS. If no channel is given, the same setting is applied to all the channels.

7.2.5 GAIN - digital signal gain

The gain control can be used to scale the camera response up or down individually per each channel. In addition to the digital gain control the sensor responsivity can be selected to be either Dynamic or Responsive giving a factor of 6 in responsivity due to the difference in quantum well size. An analog gain of 2 can be added to both options. Please refer to the SENSOR command.

It is recommended to use the SENSOR command first as far as possible and only then use the digital gain to fine tune the response. Use of values lower than 1 may cause the maximum output value to stay lower than the maximum value of the selected output range.

All changes in GAIN apply directly both to the signal and the dark level as well. If the dark level needs to be maintained, it is necessary to modify the OFFSET value respectively. A coarse estimate for the new OFFSET value can be calculated as follows and regardless of the bit depth in use:

$\text{OFFSET} \approx 50 / \text{GAIN} - 50$

Command	Description
GAIN ?	Returns the command syntax.
GAIN	Returns the present Gain setting.
GAIN [ch] <value>	Sets the Gain to <value> for the selected channel, where <value> is any number between 0.1 and 32 with up to three decimals. The default setting is 1.000.

The '[ch]' is the specifier of the channel. R, G or B for 3CMOS models. R, G, B or I for 4CMOS. If no channel is given, the same setting is applied to all the channels.

7.2.6 OFFSET - output offset

The value given by this command is directly added to or subtracted from the pixel values prior to applying the GAIN.

Command	Description
OFFSET ?	Returns the command syntax and the available range.
OFFSET	Returns the present Offset setting.
OFFSET [ch] <offset>	Changes the signal level of the selected channel prior to the GAIN stage. Offset is always given as a 12-bit number. Offset changes in any 10 bit scale need to be multiplied by a factor of 4 to get the correct value for this command. Respectively, 8 bit offsets must be multiplied by 16. Default value is zero for all the channels.

The '[ch]' is the specifier of the channel. R, G or B for 3CMOS models. R, G, B or I for 4CMOS. If no channel is given, the same setting is applied to all the channels.

The <offset> is a positive or negative integer within the range of -1023 to 1023. This equals $\pm 25\%$ of the full scale. The offset is always entered as a 12-bit number, which means that if you have set the camera for one of the 8-bit output modes, you should multiply the intended offset shift by 16 to get the offset for this command.

Please keep in mind that this command changes the digital output signal level just before the gain factor is applied. A positive number raises the output levels, while negative numbers drop the levels. The lower limit of the adjusted level is zero. Lower output values can be used for a Contrast Expansion, where the darkest response of an application is brought closer to zero.

7.2.7 FFC - flat field correction

The function of the Flat Field Correction (FFC) is to compensate for differences in the optical input. This can be shading due to lower transmission at the lens sides or similar optical corrections. The Flat Field Correction should be done when the input light distribution is as uniform as possible in order to avoid the possibility of the FFC correction adding errors to the compensation when activated.

The procedure is then to establish a scene illumination as uniform as possible and to use the intended optics and adjustments for the application. A uniform test target is needed. It is recommended to calibrate the correction slightly off focal. This can be achieved either by changing the viewing distance (recommended option) or by turning the lens a little off the best focus.

The calibration routine first switches the correction off. The correction itself is a 2-point linear calculation to compensate for all the pixel-specific differences both at the lowest response levels (darkness) as well as at the bright levels, which exist when the routine is run. Two reference lines are used. Both are an average of 32 lines. The dark reference was calibrated already at the factory (DSNU). The bright reference is taken during the calibration.

Two modes exist. The image can be flattened either individually for each channel (PEAK MODE) or to a common level (WHITE MODE), which results into a white balance. The target value for all the pixels is then the brightest value per each channel or the brightest value on any channel.

The correction unit is loaded with the new factors and the correction is turned on. The correction factors are saved and loaded along with the commands CS SAVE, CS SAVE2, CS LOAD and CS LOAD2, but because there is only one common memory location available, they actually all operate with the same data.

Command	Description
FFC ?	Returns the command syntax
FFC	Shows whether the correction is ON or OFF.
FFC MODE	Shows which of the two modes is selected.
FFC PEAK	Each channel will be calibrated to the level of its brightest pixel.
FFC WHITE	All channels will be calibrated to the same level, which is the brightest response of all the channels. Default setting.
FFC RUN	Calibrates the correction to reach the same response for all the pixels either individually for each channel or together for all the channels and turns the correction on.
FFC ON	Activates the FFC function. If FFC was never run, no correction data is available and no changes will be made to the line image.
FFC OFF	Switches the FFC function OFF. Default setting.

7.2.8 OC - Optical Corrector

The line imagers have been aligned with each other at a micrometer range accuracy on the same optical position. This is valid near the center pixels and the optical axis. Due to optical properties of the beam splitter glass block and the lens, some chromatic aberration will be present in the images towards both ends of the lines. This is caused by the different image sizes on the sensors when looking at same imaging target.

The Optical Corrector effectively scales the images to be the same size. This means that a detail on the target will be seen by the same pixel (index) on all the channels. The sensors have some extra pixels to make sure that this scaling works for all the active pixels.

The aberration has been characterised at the factory in some selected cases. The respective correction minimises the effect by bringing the counterpart pixel values together.

Command	Description
OC ?	Returns the command syntax.
OC	Returns the present settings.
OC LIST	Displays the list of available corrections with reference numbers and descriptions.
OC <nr>	Selects a correction by the reference number on the list.
OC ON	Activates the selected correction.
OC OFF	Deactivates the correction. Default setting.

7.3 Group C: Commands affecting image output format

7.3.1 CXP FORMAT - CoaXPress transmission format

This command selects the output mode for the final image data. The 4CMOS model includes also all the 3-channel output formats, in which cases only the RGB channels are output.

Command		Description
CXP FORMAT ?	3CMOS 4CMOS	Returns the command syntax and available modes.
CXP FORMAT		Returns the present setting.
CXP FORMAT RGB 8		24-bit RGB (8 bits per pixel). Default setting for 3CMOS.
CXP FORMAT RGB 10		30-bit RGB (10 bits per pixel).
CXP FORMAT RGB 12		36-bit RGB (12 bits per pixel).
CXP FORMAT RGBI 8		32-bit RGBI (8 bits per pixel). Default setting for 4CMOS.
CXP FORMAT RGBI 10		40-bit RGBI (10 bits per pixel).
CXP FORMAT RGBI 12		48-bit RGBI (12 bits per pixel).

7.3.2 COLOR SEL - Select the colors for output

Both cameras include a switch matrix to connect any sensor to any or multiple of the output channels. Additionally, the 4CMOS models can send the data in 3-channel formats. All channel specific commands still affect the original channels.

Command	Description
COLOR SEL ?	Returns the command syntax.
COLOR SEL	Returns the present setting.
COLOR SEL <c1> <c2> <c3> <c4>	Selects the sources for the output channels. Default setting is 'R G B' for the 3CMOS and 'R G B I' for the 4CMOS models. All the three or four parameters must always be given. Please note that if the 4CMOS model is set into a 3-channel output format, still four parameters are required (the 4 th will not be used).

Example:

COLOR SEL B G R
COLOR SEL R G I B

3CMOS only: reverses the RGB order to be BGR.

4CMOS only: swaps the B and I channels for output.

If the camera is set into any of the 3-channel output formats, the contents of the RGB formats originates from R, G and I channel imagers, respectively and the B channel is ignored.

7.3.3 READOUT - pixel readout direction

Sets the pixel readout to normal or reverse direction.

Command	Description
READOUT ?	Returns the READOUT command syntax.
READOUT	Returns the present READOUT setting.
READOUT NORMAL	Sets the READOUT direction to normal starting with first pixel. Default.
READOUT REVERSE	Sets the READOUT direction to reverse starting with last pixel.

7.3.4 ROI - regions of interest

This command can be used to select only specific sections of each line to be sent out. Up to four regions can be defined. The selected parts of the line will be combined together to make one shorter line. This increases the limit of the maximum line rate, the absolute maximum still being set by the selected MODE. There are no empty pixels or spaces in between the regions in the output data.

Furthermore, both binning and reversed readout order can be applied after this. Please note that all pixel number indices still and always refer to the real, physical pixel numbers of the sensor itself. First pixel is labelled as '1' and thus the last pixel is number 2048.

For simplicity and first trials it is recommended to divide the full range of pixels into 8 sections of 256 pixels each and then select individual or groups of sections by using the respective start and end pixel indices.

Alternatively, the selections can be optimised by following these detailed rules. The start pixel index must always be odd and smaller than the respective end pixel index at each region and the regions must not overlap. All indices must be within range of 1 to 2048. **Minimum width** of each ROI is **128 pixels**, or **256 pixels** if binning is in use. Each region may have **individual widths**, but they all must be **divisible by 64**. Additionally, **GenICam™ use requires that the index of each end pixel must be divisible by 16**. Changes to selections are made by defining the complete set again.

Examples:

Region #1		Region #2		Region #3		Region #4	
□□□□□...□□□□□□		□□□□□□□...□□□□□□□□		□□□...□□□		□□□...□□□	
↑	↑	↑	↑	↑	↑	↑	↑
X0	X1	X2	X3	X4	X5	X6	X7
97	352	401	656	993	1280	1409	2048

Command	Description
ROI ?	Returns the syntax.
ROI	Returns the present settings.
ROI X0-X1	Sets the ROI to start at pixel X0 and end at pixel X1.
ROI X0-X1, X2-X3	Sets region #1 to start at pixel X0 and end at pixel X1 and region #2 to start at pixel X2 and end at pixel X3.
ROI X0-X1, X2-X3, X4-X5	Sets region #1 to start at pixel X0 and end at pixel X1 and region #2 to start at pixel X2 and end at pixel X3 and region #3 to start at pixel X4 and end at pixel X5.
ROI X0-X1, X2-X3, X4-X5, X6-X7	Sets region #1 to start at pixel X0 and end at pixel X1 and region #2 to start at pixel X2 and end at pixel X3 and region #3 to start at pixel X4 and end at pixel X5 and region #4 to start at pixel X6 and end at pixel X7.
ROI ON	Activates ROI. If no regions are specified then all 2048 pixels will be sent out. Returns the same regions into use unless new regions have been defined.
ROI OFF	Deactivates ROI. Default setting.

7.3.5 BINNING - paring of pixels

Binning mode combines adjacent pixels as pairs either to double the response by summing the two original values or to decrease noise by taking the average of the two values. ROI operation may be in use prior to this. Binning decreases the number of output values by a factor of two. This increases the limit of the maximum line rate, the absolute maximum still being set by the selected MODE.

The two output values are added together in the summing mode and the output is limited to the maximum digital value of the original pixel values. The averaging mode sums the two values with no maximum limit and then takes the most significant bits into use to represent the new combined pixel (lowest bit is removed).

The index of the first pixel of each pair must be odd.

Command	Description
BINNING ?	Returns the BINNING command syntax.
BINNING	Returns the present BINNING setting.
BINNING AVG	Activates BINNING in the averaging mode.
BINNING SUM	Activates BINNING in the summing mode.
BINNING OFF	Deactivates BINNING mode. Default setting.

7.3.6 ACQ - start and stop of acquisition

CoaXPress links stay active after connections have been established, but actual image data is being transferred only when the acquisition is enabled.

Command	Description
ACQ ?	Returns the command syntax.
ACQ	Shows the status.
ACQ START	Enable image transfer.
ACQ STOP	Disable image transfer.

GenICam™ compatible software uses these functions directly as needed. The acquisition should be stopped (ACQ STOP) before any of the following telnet commands:

- ROI
- BINNING
- READOUT
- CXP FORMAT
- TEST
- LINE CTRL
- CS LOAD1, CS LOAD2
- CS FACTORY RESET

The acquisition is always disabled after power-up, restart and loading of factory settings. The status cannot be saved. The commands CS LOAD and CS LOAD2 do not change the status.

7.4 Group D: Utilities

7.4.1 HELP or '?' - list of commands

7.4.2 VER - camera information

This command displays version information of various components of the camera. The command also returns camera model number, MAC address and serial number.

Command	Description
VER	Display version information and identifiers of the camera.

7.4.3 STATUS - camera information and settings

This command includes the VER command and additionally shows all camera settings.

Command	Description
STATUS	Display all identifiers and user settings.

7.4.4 TEST - test patterns

The image data can be replaced by artificially generated, known test patterns to help interfacing the camera, trouble shooting, and locating faults. Five patterns are available. They all depend on the selected bit depth. The channels operate independently. Modes can be selected or switched off individually by using the [ch] parameter. If no channel is given, the command applies to all the channels.





Horizontal patterns ramp either up or up-down within each line with steps that equal the selected camera output bit depth. All lines are then equal. Vertical patterns perform the same, but in line to line direction. All values within each line are then equal.

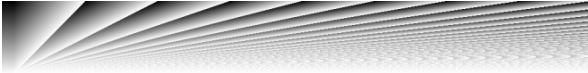
The last pattern, P5, is a combination of these two directions to enable tracking in both domains with a single test pattern. It starts exactly like the horizontal pattern P1, but when advancing to next lines it leaves the darkest pixel values out one by each line. This effectively also shortens the length of the horizontal sequences causing the position of the horizontal ramps to move from line to line. The last line of one sequence then finally only contains the maximum values making it look like one completely white line.

SW-2000T-CXP2 and SW-2000Q-CXP2

The lowest value is actually always the same as what the vertically changing pattern P3 would have been if it had been started at the same time as P5. Thinking of the visual look of the pattern P3, the correct look of this pattern (P5) can be better understood: the base level or the darkest part of the pattern varies just like the vertically ramping P3 would vary. And while the base level gets brighter the horizontal pattern also gets tighter as the lengths of those horizontal ramps decrease making the respective image look like a pattern of higher frequencies.

Please note that the selection is not saved nor loaded along with the other settings. Power cycling, rebooting and loading of factory settings will switch the test mode off.

Command	Description
TEST [ch] OFF	No test pattern. Image data originates from the sensor(s). Default.
TEST [ch] P1	Sawtooth: horizontal rising ramps from 0 to maximum. All lines are equal. In case of 8-bit output, the line graph includes 8 such periods when advancing across the 2K pixels. The respective image should thus look like this: 
TEST [ch] P2	Triangles: horizontal ramps from 0 to maximum followed by falling ramps from maximum to zero. All lines are equal. In case of 8-bit output, the line graph includes 4 such periods when advancing across the 2K pixels. The respective image should thus look like this: 
TEST [ch] P3	Vertical sawtooth: rising ramps from 0 to maximum in line to line direction. Each line has only one value for all the pixels. In case of 8-bit output, the ramp from black to white takes 256 lines in the respective image: 
TEST [ch] P4	Vertical triangles: rising ramps from 0 to maximum followed by falling ramps from maximum to zero in line to line direction. Each line has only one value for all the pixels. In case of using an 8-bit output mode, the cycle repeats itself every 512 lines. The respective image should look like this: 

TEST [ch] P5	<p>A combination of rising ramps in both directions. Horizontally the length of the sequence varies at the same phase as the lowest value of the pattern changes from line to line.</p> <p>Vertically the lowest value of each line-specific pattern varies from line to line as rising ramps from zero to maximum, similarly to how the pattern P3 behaves on its own.</p> <p>The resulting image is shown below (8-bit). The first line is identical to any line of P1. Then, instead of always starting from zero, the lowest value will rise by one per line thus also making the sequence shorter. This will continue making the pattern look like having higher frequencies all the way until finally a completely white line is produced. The sequence will then start over from the beginning.</p> 
TEST [ch]	Returns information on the current status of test modes.

Note:

The '[ch]' is the specifier of the channel. R, G or B for 3CMOS models. R, G, B or I for 4CMOS. All ramps increase or decrease by one level per pixel or line, where the step follows the selected output bit depth of 8, 10 or 12 bits. When the direction of any ramp changes, the last value of previous ramp is repeated once as the first value of the next ramp to keep the lengths of the sequences equal, when feasible.

7.4.5 REBOOT - restart the camera

The command REBOOT resets the camera and starts it from the beginning as if the power had been cycled.

Command	Description
REBOOT	Restart the camera. Same initializations as during power-up. Close existing Telnet sessions and start new ones as needed.

7.4.6 FIRMWARE UPDATE - initiate the MCU update

This command starts the loading of new firmware for the MCU. Please refer to chapter 5.14 for detailed instructions. Also the FPGA update process is described there.

Command	Description
FIRMWARE UPDATE	Initiates the microcontroller firmware update after confirmation.

8 Summary of commands

A - General settings.				
	Command Function	Command Format	Parameter	Remarks
1	Camera operating mode	MODE	<file name>	fundamental settings, reboot required
2	Network settings	NET		
3	set IP address	NET IP <address> NET IP AUTO	xxx.xxx.xxx.xxx	static, DHCP off dynamic, DHCP on
4	set subnet mask	NET MASK <mask>	xxx.xxx.xxx.xxx	only with static address
5	set default router	NET GATEWAY <address>	xxx.xxx.xxx.xxx	only with static address
6	reset net settings	NET FACTORY RESET		
7	camera name	NET NAME <name>	new name	
8	remove the camera name for network	NET NAME DELETE		
9	close session	NET CLOSE, NET QUIT or BYE		
10	Save capture settings	CS SAVE CS SAVE2		affected commands: SENSOR LINE RATE LINE PERIOD LINE CTRL LINE IT GAIN OFFSET CXP FORMAT COLOR SEL READOUT ROI BINNING FFC OC
11	Load capture settings	CS LOAD CS LOAD2		
12	Restore factory settings for image capture and save	CS FACTORY RESET		

SW-2000T-CXP2 and SW-2000Q-CXP2

B - Commands affecting exposure				
	Command Function	Command Format	Parameter	Remarks
1	Quantum Well size and analog gain	SENSOR [ch]	DYNAMIC 1 DYNAMIC 2 RESPONSIVE 1 RESPONSIVE 2	Larger capacity, lower noise. Smaller capacity, higher responsivity. Followed by analog gain of 1x or 2x.
2	Line interval	LINE PERIOD <time>	Line interval in μ s, from 12.5 to 100 000	Minimum depends on MODE, ROI, binning, bit depth, and link speed.
3	Line rate (see the note)	LINE RATE <rate>	Lines per second, from 10 to 80,000	Maximum depends on MODE, ROI, binning, bit depth, and link speed.
4	Timing source	LINE CTRL <mode>	INT = internal MIX = external line timing, internal integration time PWC = Pulse Width Control	Recommended minimum line rate under external control: 10 Hz.
5	Integration time as microseconds	LINE IT [ch] <time>	2.00 to 99,998.60 μ s	Maximum depends on line rate.
6	Integration time as percentage	LINE IT [ch] <time>%	0.10 % to 100.00 %	not in MIX mode
7	Digital gain	GAIN [ch] <gain>	0.100 to 32.000	
8	Offset	OFFSET [ch] <offset>	-1023 to 1023	entered as 12 bits
9	Individual FFC	FFC PEAK		per each channel
10	White balance	FFC WHITE		per highest channel
11	Calibrate the Flat Field Correction	FFC RUN		define and apply
12	activate correction	FFC ON		
13	deactivate	FFC OFF		
14	Optical Corrector	OC <option>	LIST <nr> ON OFF	show all corrections select one activate deactivate

The '[ch]' is the specifier of the channel. R, G or B for 3CMOS models. R, G, B or I for 4CMOS.

Note: If the status inquiry 'LINE' or 'LINE RATE' returns the value 8888.0 Hz, the camera has automatically dropped the line rate to a safe value due to a too slow CXP Link speed that has been set after the faster line rate was already once accepted (in use or saved).

SW-2000T-CXP2 and SW-2000Q-CXP2

C - Commands affecting image output format						
	Command Function	Command Format	Parameter	Remarks		
1	CoaXPress format	CXP FORMAT <mode>	RGB 8 RGB 10 RGB 12 RGBI 8 RGBI 10 RGBI 12	24-bit RGB 30-bit RGB 36-bit RGB 32-bit RGBI 40-bit RGBI 48-bit RGBI	3CMOS	4CMOS
2	Switch matrix	COLOR SEL	<c1> <c2> <c3> <c4>	Any RGBI channel to any RGBI output.		
3	Readout direction	READOUT	Normal or Reverse			
4	Set the regions of interest	ROI <regions>	Pixel numbers, 1 to 4 regions.	Check the list of requirements below.		
5	Activate ROI	ROI ON				
6	Deactivate ROI	ROI OFF				
7	Pixel binning	BINNING <mode>	AVG, SUM or OFF			
8	Start acquisition	ACQ START				
9	Stop acquisition	ACQ STOP		Use once before any of the other commands of this table.		

Requirements for ROI.

For simplicity and first trials it is recommended to divide the full range of pixels into 8 sections of 256 pixels each and then select individual or groups of sections. The following list shows the detailed rules to optimise the regions depending on operating mode.

1. Pixel indices are from 1 to 2048 (also with binning).
2. Start index of each region must be odd.
3. Width of each ROI must be divisible by 64.
4. Width of each ROI must be at least 128 pixels.
5. Width of each ROI must be at least 256 pixels if binning is in use.
6. Regions must not overlap.
7. All regions must be set at once and in ascending order of pixel indices.
8. GenICam™ use additionally requires that each end pixel index is divisible by 16.

D - Utilities.				
	Command Function	Command Format	Parameter	Remarks
1	Help	HELP or '?'		list of commands
2	Help on any specific command	add a ' ?'		examples: GAIN ? LINE RATE ?
3	Query of existing setting	<command> with no parameters		examples: GAIN LINE RATE
4	Camera identifiers and version numbers	VER		Model, SN, MAC. Versions: MCU, HW, sensor, logic.
5	Camera information and settings	STATUS		
6	Selection of test patterns	TEST [ch] <pattern> TEST OFF	From P1 to P5	not saved
7	Re-booting the camera	REBOOT		close Telnet sessions
8	Firmware update	FIRMWARE UPDATE		http://10.10.10.10

The '[ch]' is the specifier of the channel. R, G or B for 3CMOS models. R, G, B or I for 4CMOS.

9 Software tools for camera communications

The camera can communicate either via GenICam™ SDK or the Ethernet (10/100) port. Both communications can be used at the same time. The reply is sent to only the channel from where the command was received.

CoaXPress interface supports GenICam™ for use with compatible user software like the JAI SDK, which can be downloaded from the JAI web site.

Ethernet port supports multiple Telnet sessions at the same time. Standard terminal programs can be used for control at command level. Default IP address is 10.10.10.10. Telnet Port is number 23.

JAI® provides a control tool as Windows® software and a web browser access.

9.1 JAI Sweep Ethernet Tool

The Sweep Ethernet Tool is a telnet terminal program with possibility to run scripts and to display single line graphs (average of 32 lines).

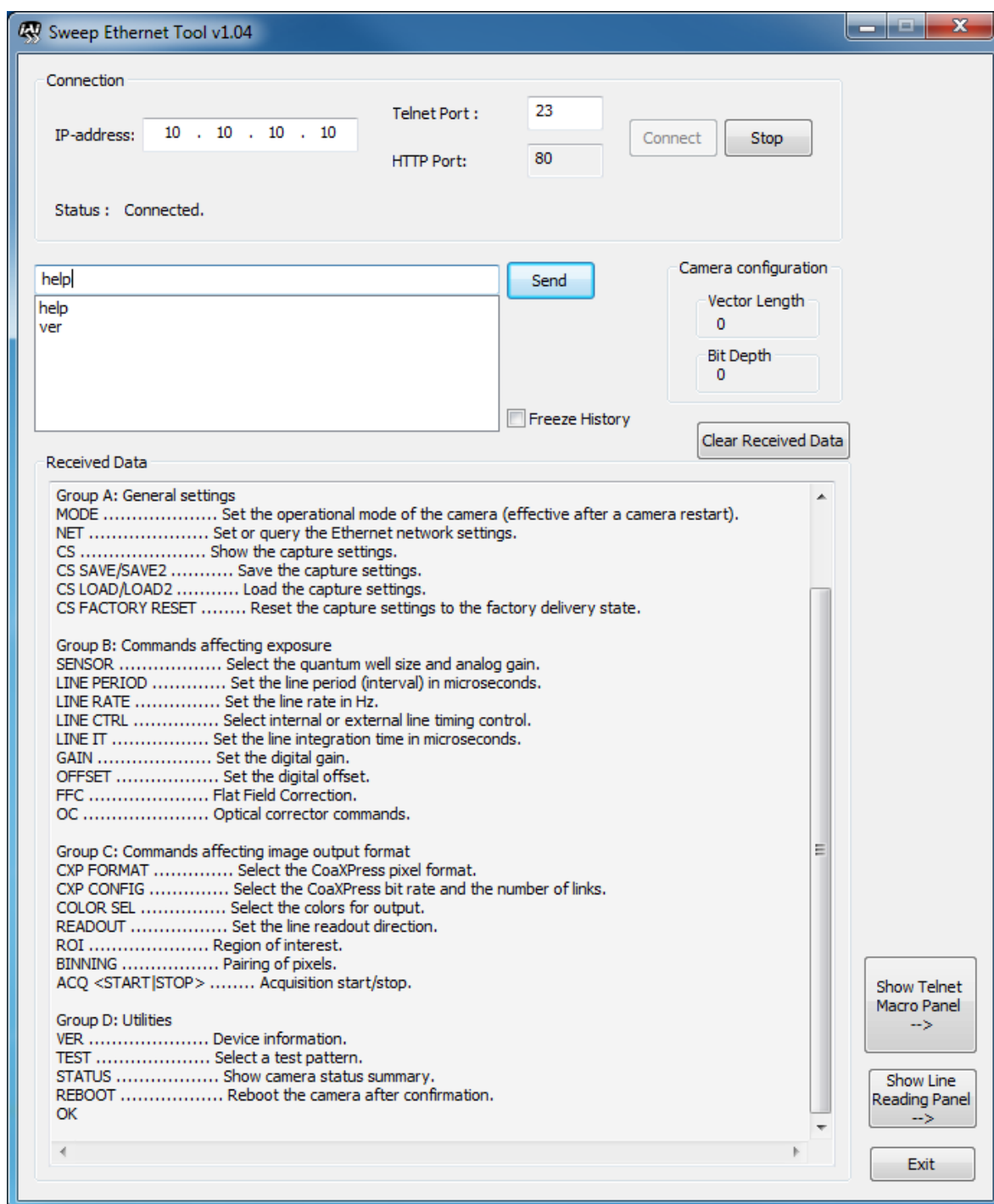


Fig.9. Front page after initialization and the help command.

SW-2000T-CXP2 and SW-2000Q-CXP2

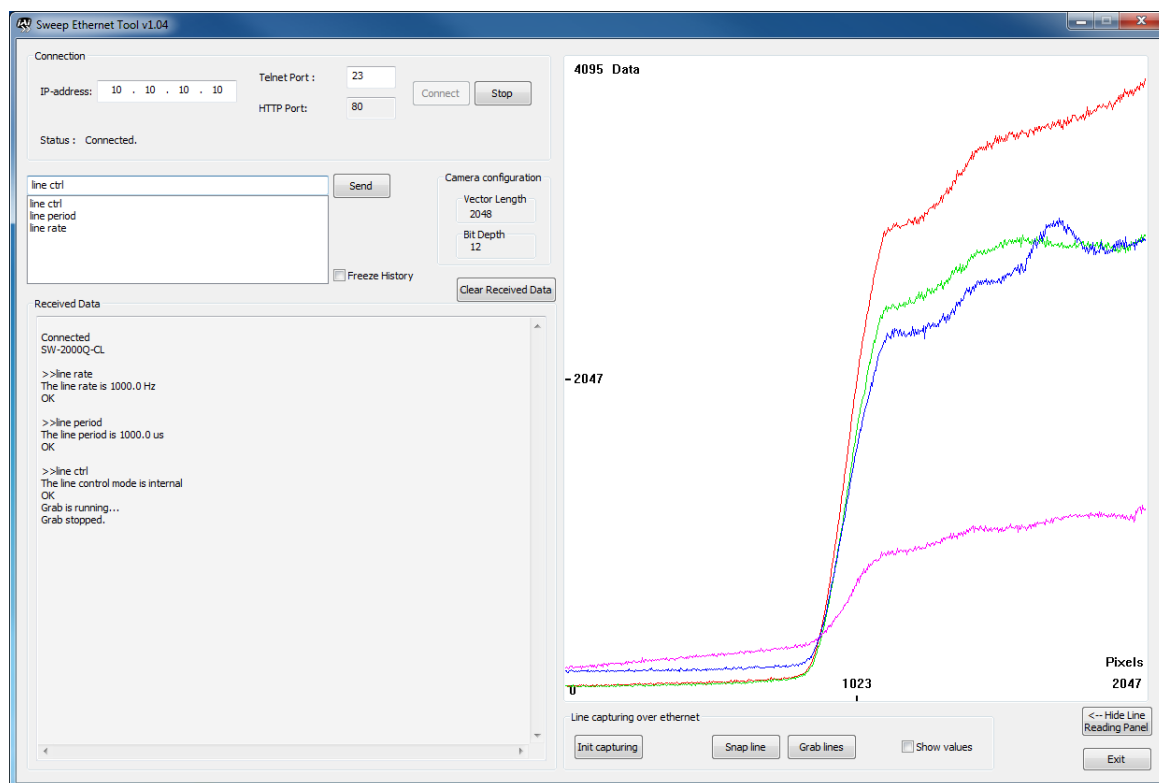


Fig.10. Line graph display with no frame grabber. A 4CMOS display as the example.

9.2 Internal web server

The internal Web server can be accessed by standard web browsers at <http://10.10.10.10/>.

It offers some documents for download and is used while updating camera firmware.

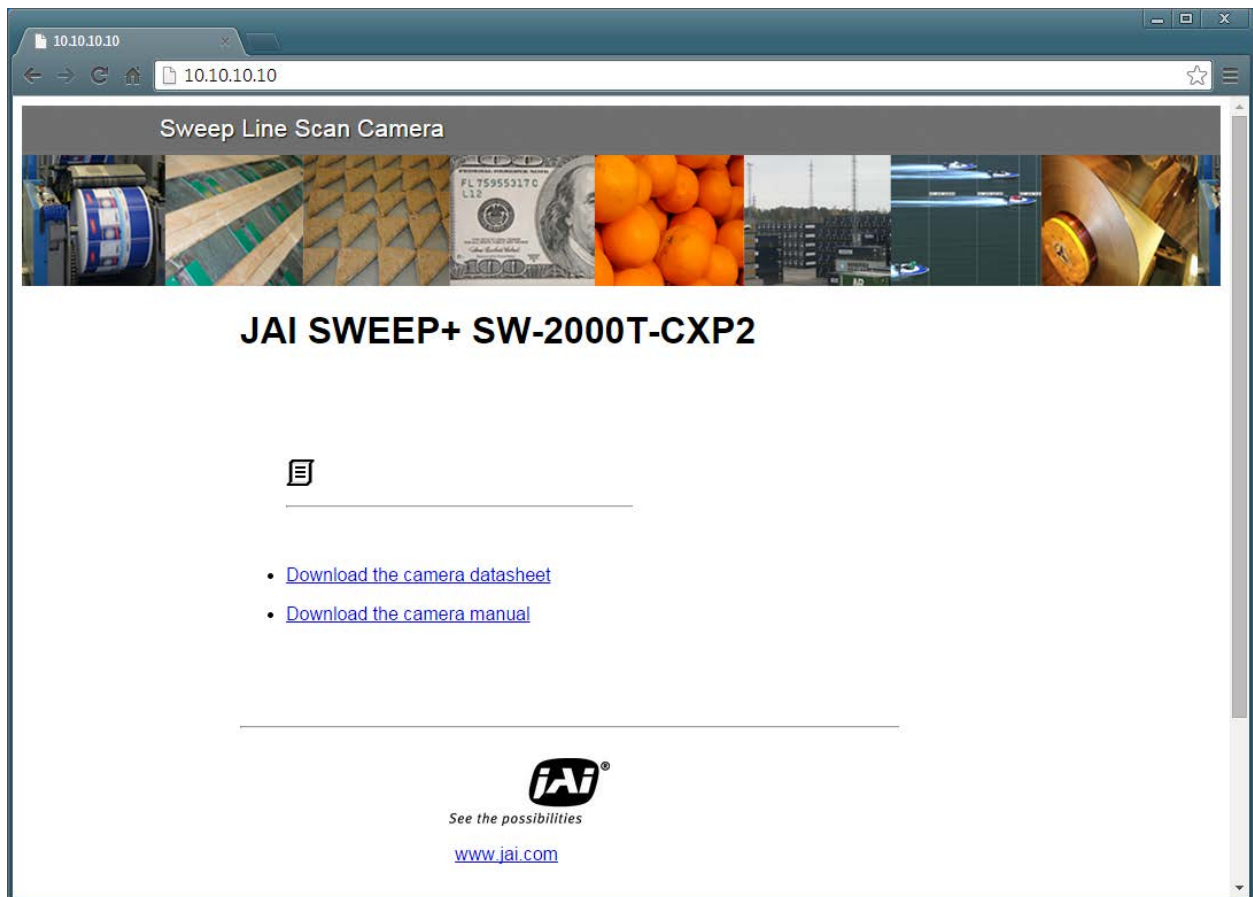


Fig.11. Home page. 3CMOS model as the example.

10 External dimensions

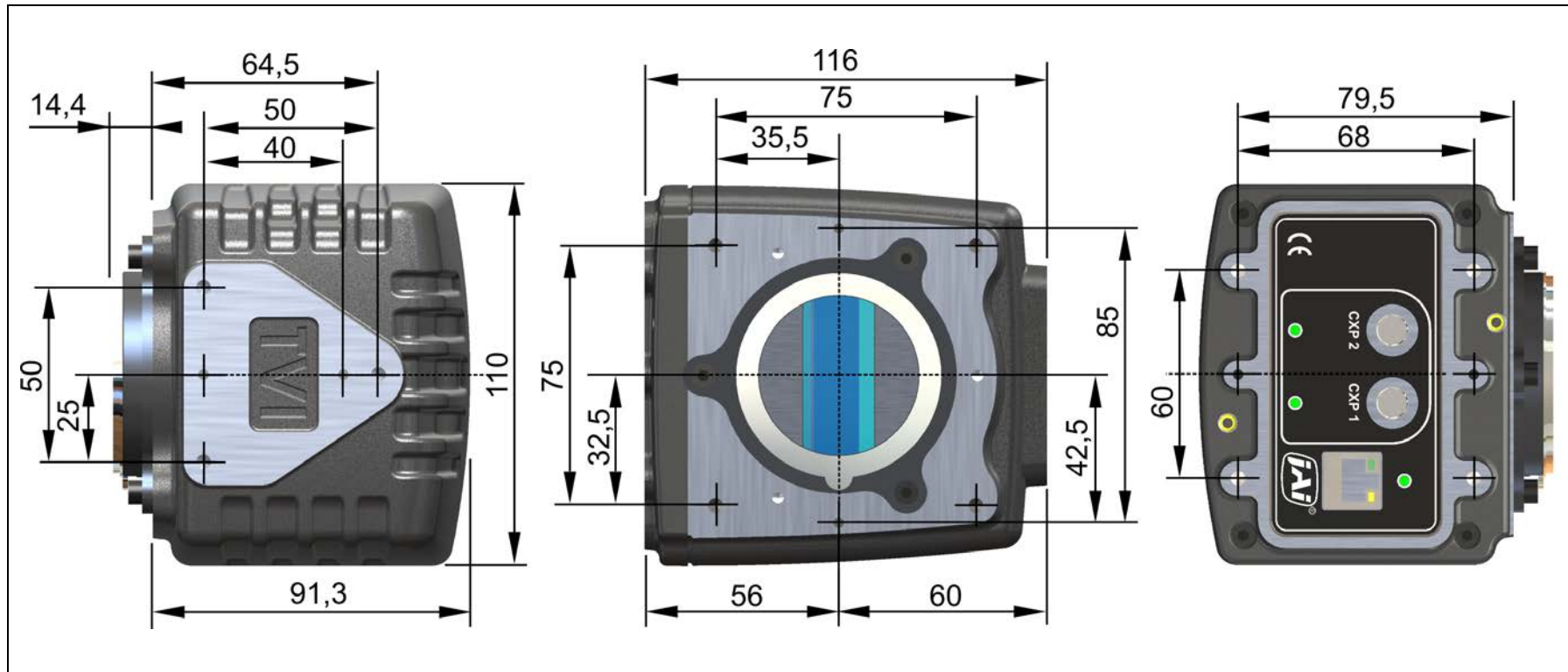


Fig.12. External dimensions in mm.

11 Specifications

11.1 Operating range

Parameter	Min	Typical	Max	Unit	Notes
Number of pixels, each	2048	-	2048	-	CMOS (custom), line scan
Pixel size	20.0	-	20.0	μm	square
Fill factor	100	-	100	%	
Length of each imager	40.96	-	40.96	mm	
Line scan period	12.5	-	100k	μs	line rate: 10 Hz to 80 kHz
Electronic shutter in internal mode	2	-	99,998	μs	integration time
Internal A/D conversions		12½		bit	
Analog gain	1x	-	12x	-	only discrete values of 1x, 2x, 6x or 12x (SENSOR command)
Digital gain	0.1x	-	32x	-	
Flange back distance		46.5		mm	Nikon® F-mount
Lens protrusion	-	-	15	mm	from flange of Nikon® F-mount
Power consumption			18	W	
Temperature, operating storage	+5 -10	- -	+40 +60	°C	
Humidity, operating and storage	5	-	80	%	relative, non-condensing
Vibration			3	G	IEC 60068-2-6
Shock			25	G	IEC 60068-2-27
Dimensions (with no lens mount)		110 116 91.3		mm	width height depth
Weight		1200		g	

SW-2000T-CXP2 and SW-2000Q-CXP2

11.2 Common properties

Property	Notes			
Operation modes	Internal (internal line rate, internal shutters) Mixed (external line rate, internal shutters) Pulse Width Control, PWC (CXP trigger for line rate and shutter)			
Data interface	CoaXPress standard, revision 1.0 or 1.1 (default).			
CoaXPress data formats, bit depth is per channel	RGB 8	24-bit RGB	3CMOS	4CMOS
	RGB 10	30-bit RGB		
	RGB 12	36-bit RGB		
	RGBA 8	32-bit RGBI		
	RGBA 10	40-bit RGBI		
	RGBA 12	48-bit RGBI		
Communication interface	CoaXPress (incl. GenICam™). 10/100 Mbps Ethernet.			
Protective glass or filter on input window	optional			
Regulation	EN 61000-6-2 (2005), EMC immunity EN 61000-6-4 (2007), EMC emissions FCC Part 15, Subpart B			

11.3 Performance per selected sensor mode

Parameter	Symbol	Responsive 1	Dynamic 1	Unit	Notes
Quantum efficiency	QE	60	60	%	
Quantum well size		60	360	ke ⁻	
Conversion factor		6.4	1.1	DN/ke ⁻	
Signal-to-noise ratio	SNR	240 : 1 48	580 : 1 55	dB	EMVA-1288
Dynamic range	DR	63	66	dB	
Temporal dark noise		2.9	1.9	DN	
Responsivity		480	80	DN/nJ/cm ²	
Linearity error		0.5	0.7	%	5 % to 95 % of saturation

Notes:

- all specifications are subject to change without notice
- wavelength of light: 625 nm
- DN as 12 bit
- Gain: 1.0
- $DR = 20 \lg(4095/\text{dark noise}) \text{ dB}$
- $SNR \approx \sqrt{(\text{Quantum well size})} : 1$
 $= 20 \lg(SNR) \text{ dB}$

11.4 Spectral response

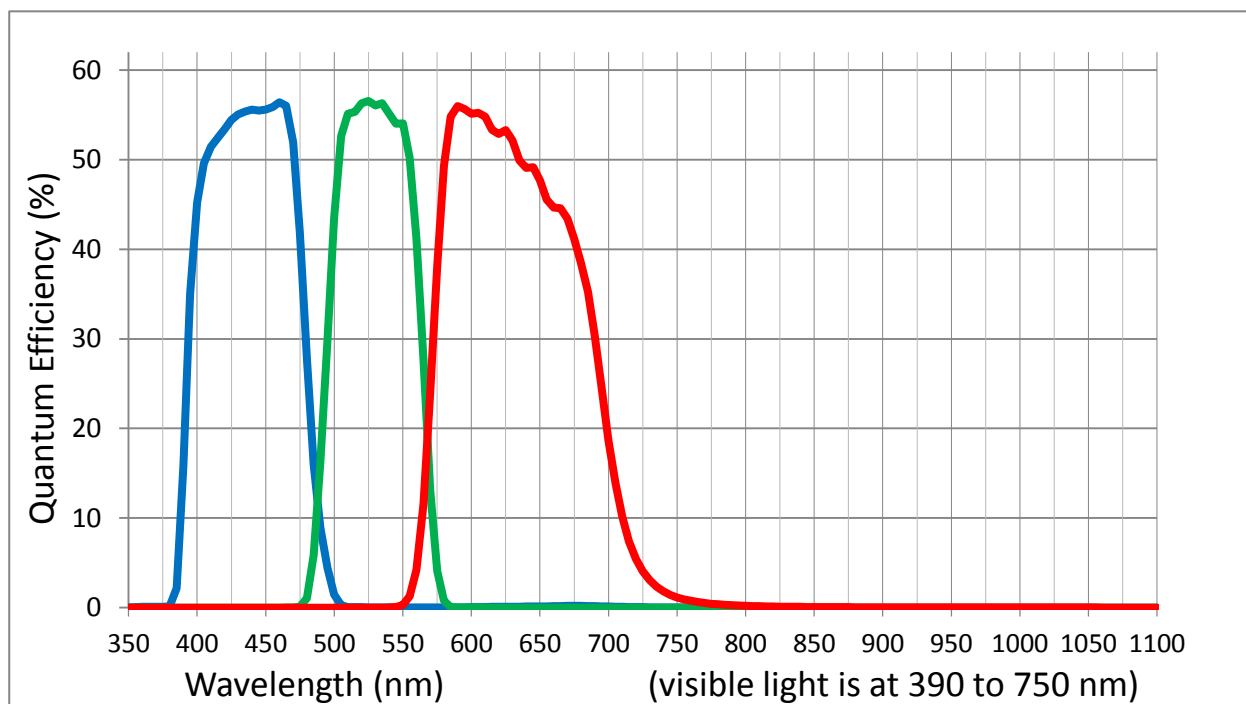


Fig. 13. Total spectral response, 3CMOS, typical, without lens.

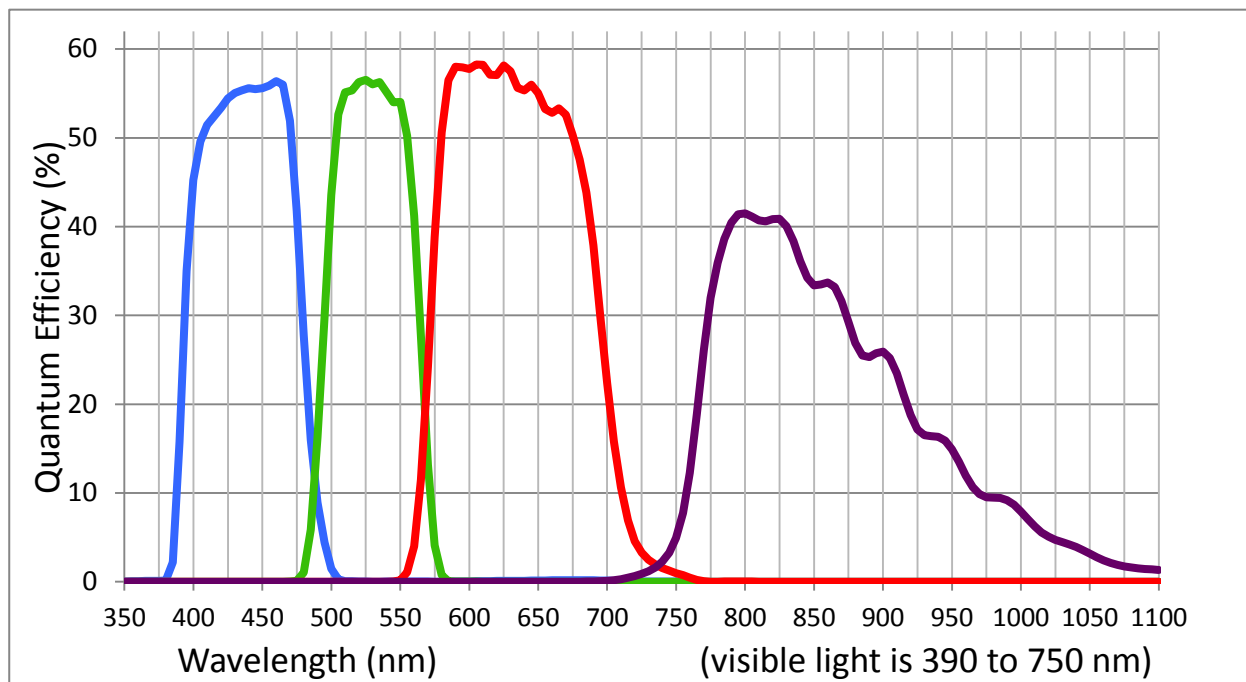


Fig. 14. Total spectral response, 4CMOS, typical, without lens.

12 Change History

Date	Revision	Changes
12 May 2015	1.3	First Release.

SW-2000T-CXP2 and SW-2000Q-CXP2

User's Record

Camera type: ☐ Sweep+ SW-2000T-CXP2
 ☐ Sweep+ SW-2000Q-CXP2

Revision: Release A, rev.1.3

Serial No.

Firmware version. MCU: 1.074 (7 May 2015)
 Logic: 40.015 (18 March 2015)

Please contact your local JAI distributor for camera revision history.

User's mode settings.

User's modifications.

Company and product names mentioned in this manual are trademarks or registered trademarks of their respective owners.
JAI A-S cannot be held responsible for any technical or typographical errors and reserves the right to make changes to products and documentation without prior notification.

Europe, Middle East & Africa

Phone +45 4457 8888

Fax +45 4491 3252

Asia Pacific

Phone +81 45 440 0154

Fax +81 45 440 0166

Americas

Phone (toll-free)

+1 800 445 5444

Phone +1 408 383 0300

Visit our web site at www.jai.com



See the possibilities